



Product Catalog | ver.4.1



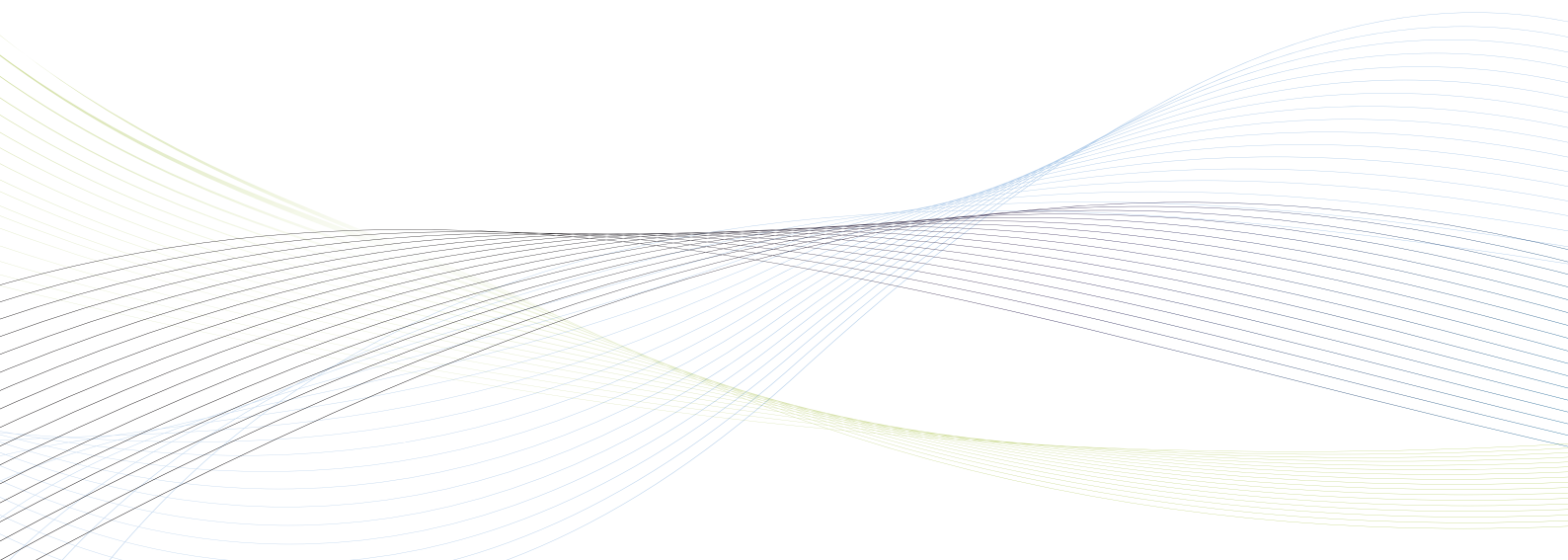
"The healthy coexistence of people and animals through the control of disease"

All living things are exposed to disease during their life, and mankind has developed diagnostic tests and medicines for treatment of many of these diseases. There still remain diseases that we have not managed to overcome, and new diseases continue to emerge.

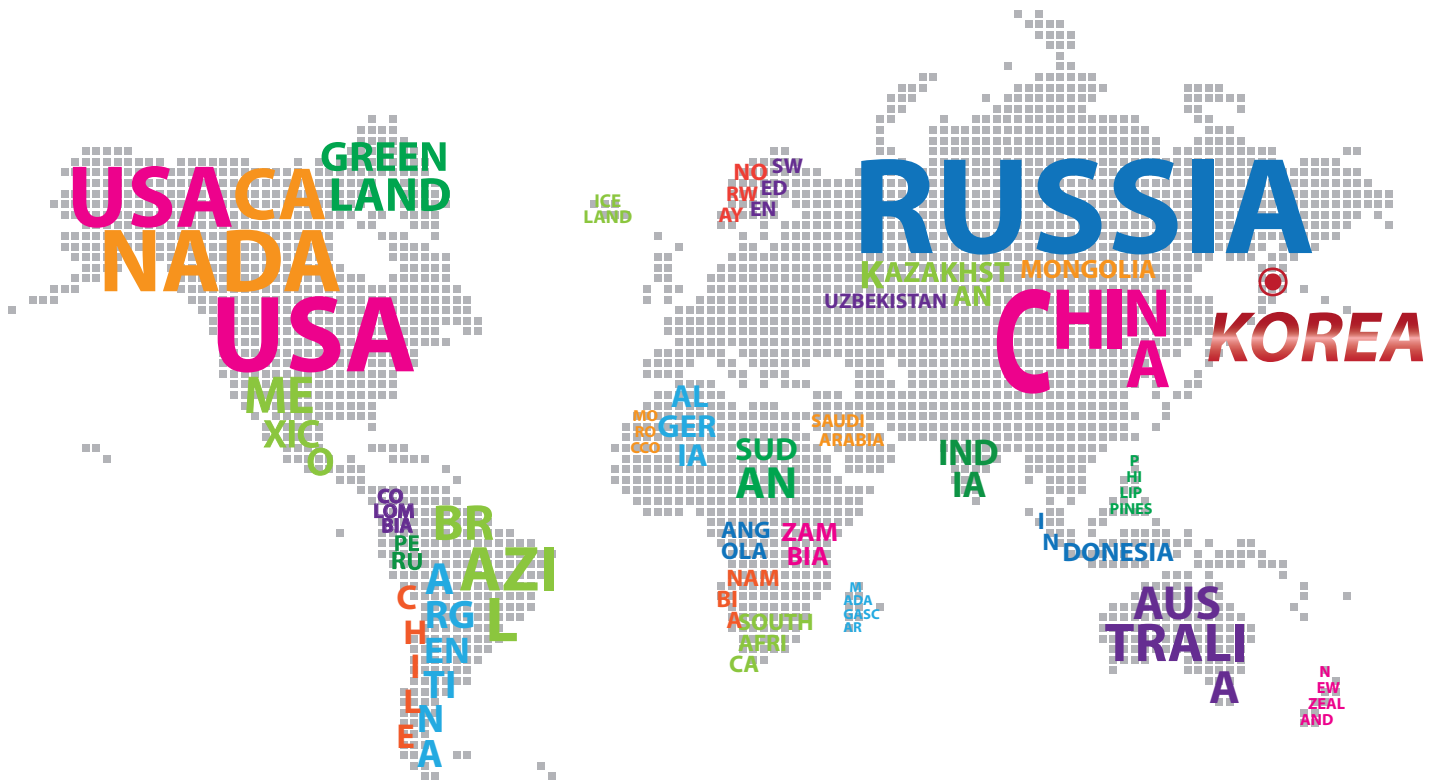
Diagnostics is the first step needed to manage these diseases. Early and accurate detection is very important for administering suitable treatment, as well as the prevention and control of the diseases spreading through a population.

BioNote products play a central role in the business of disease diagnostics. With its expertise in detection techniques, continual research and development and proven ability to produce new and innovative diagnostic products, BioNote will continue to grow.

The BioNote dream is to assist in achieving a healthy life for people, animals and all living things, by trying to create a society which has "The healthy coexistence of people and animals through the control of disease".



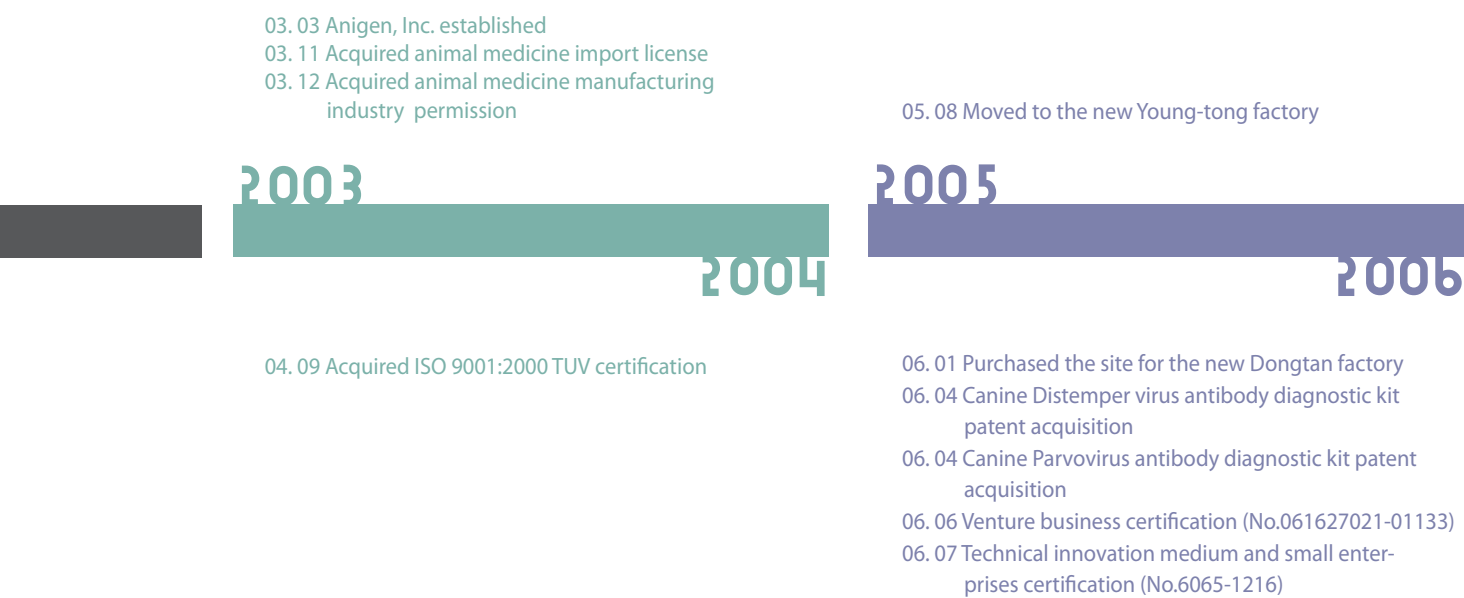
BioNote has distribution channels in over 80 countries globally



INTRODUCTION

BioNote, Inc. was established in the beginning of 2003, and is considered a pioneer of in-vitro Diagnostics for veterinary needs. BioNote delivers innovative and creative solutions for our customers improving their vet healthcare. BioNote has its own automated facility to manufacture a wide range of high quality products developed by a highly competent R&D center. BioNote has manufactured diagnostic products in accordance with ISO 9001:ISO13485 certification, and has expanded overseas sales network in over 80 countries and is still continuing to grow.

HISTORY



CONTENTS

Canine	
Health check	Intestinal Disease
CPV Ab 2.0, CDV Ab 2.0	CPV Ag
_06	_08
	CCV Ag
	_09
	CPV/CCV Ag
	_10
	Giardia Ag
	_11
	CPV/CCV/Giardia Ag
	_12

- 07. 07 Gyeonggi-do excellent medium and small enterprises selection
- 07. 09 H5 and general pathogenic avian influenza virus antigen diagnostic
- 07. 11 Name change of Anigen, Inc. to Animal Genetics, Inc.
- 07. 12 Winner of the Animal medicine manufacturer self-regulation checking system Prize

- 09. 01 Anigen AIV Ab ELISA knowledge economics department new product certification (NEP) acquisition
- 09. 02 Name change of Animal genetics, Inc. to Bio-Note, Inc.
- 09. 03 Moved to new Dongtan factory
- 09. 05 Food & Drug Administration medicine manufacturing industry permission acquisition
- 09. 12 ISO 2003:13485 TUV certification acquisition
Anigen Rapid Canine Heartworm Ag Test Kit
USDA licensed

2007

2009

2008

2010-2012

- 08. 02 World's first Influenza H3N2 type confirmation assay development
- 08. 07 Novel canine influenza viruses and vaccine patent acquisition
- 08. 12 Winner of the Animal medicine manufacturer self-regulation checking system Prize

- 11. 01 Acquisition by Alere
- 12. 02 Enlarged production facility and HQ
- 12. 04 Applied for International Patent for A Novel Canine Influenza virus and Vaccine Therefore(PCT)

Feline

Respiratory Disease

CDV Ag	_13
CIV Ag	_14
CDV/CAV Ag	_15
CIRD-3 Ag	_16

Other Disease

HW Ag	_17
Leishmania Ab	_18
E.canis Ab	_19
Rabies Ag	_20
C.Brucella Ab	_21
Total Ig E	_22
Anaplasma Ab	_23
Lyme Ab	_24

Feline Disease

FIV Ab/FeLV Ag	_25
FPV Ag	_26
FCoV Ag	_27
FCoV Ab	_28
Toxoplasma Ab	_29

CPV Ab 2.0, CDV Ab 2.0

General Information

Purpose : Titration of Canine Parvo virus or Distemper virus antibody (Ig G)

Principle : Immunochromatographic assay

Specimen : Whole blood, plasma or serum

Materials provided :

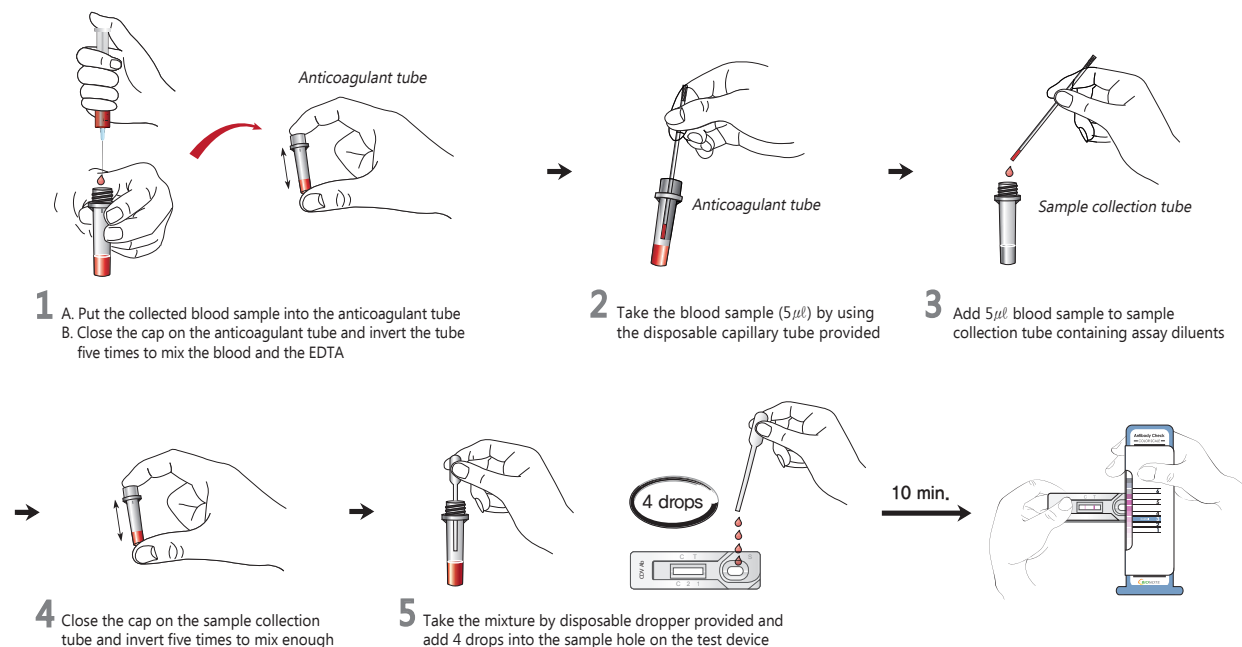
- Anigen Rapid CPV Ab/CDV Ab test device
- Sample collection tube containing assay diluents
- Anticoagulant tube
- Disposable capillary tube
- Disposable dropper

Special Features :

- World's first CPV Ab and CDV Ab titer rapid immunochromatographic test kit
- Semi - quantitative detection of IgG antibodies
- One step testing procedure : Easy to use, Saving time and labor
- Quick & Accurate



Test Procedure

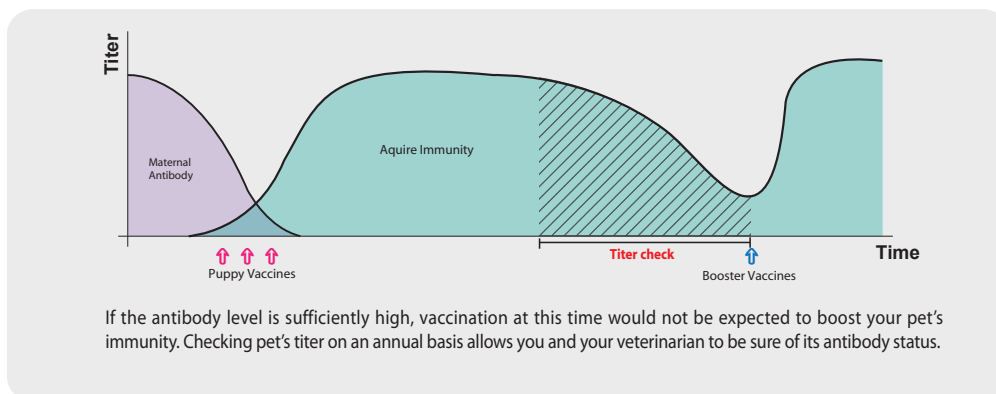


Ordering Information

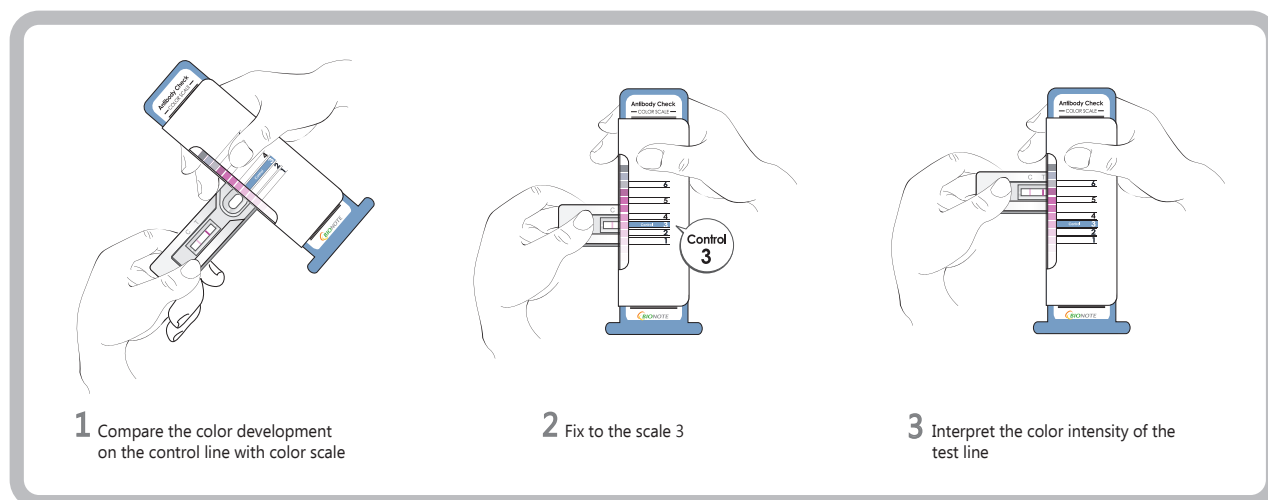
Cat. No.	Description	Type	pack size
RB21-51	CPV Ab 2.0	Device	10 Tests/Kit
RB21-52	CDV Ab 2.0	Device	10 Tests/Kit

Application

- For serological diagnosis of CPV and CDV infection
- For prediction of the prognosis of CPV and CDV patient
- For evaluation of immune status of puppies after vaccination
- For determination of the proper time of vaccination by measuring a maternal antibody titer
- For determination of the proper time for revaccination



Reading the of titer check system



Line color Intensity	Titer	Color scale level and immune status
<div style="display: flex; justify-content: space-around;"> C T </div>	CPV - HI Below 80 CDV - SN Below 16	The color development of T line is weaker than that of C line (Color scale 1~2) **Antibody titer is low against CDV or CPV This is indicative of poor immune status (additional vaccination required)
<div style="display: flex; justify-content: space-around;"> C T </div>	CPV - HI 80 CDV - SN 16	The T line has equal color development with C lines (Color scale 3) **Antibody titer is medium against CDV or CPV This is indicative of a good immune status
<div style="display: flex; justify-content: space-around;"> C T </div>	CPV - HI Over 80 CDV - SN Over 16	The color development of T line is higher or same with C line (Color scale 4~6) **Antibody titer is high against CDV or CPV This is indicative of a excellent immune status

CPV Ag

General Information

Purpose : Detection of Canine Parvo virus antigen

Principle : Immunochromatographic assay

Specimen : Canine feces

Materials provided :

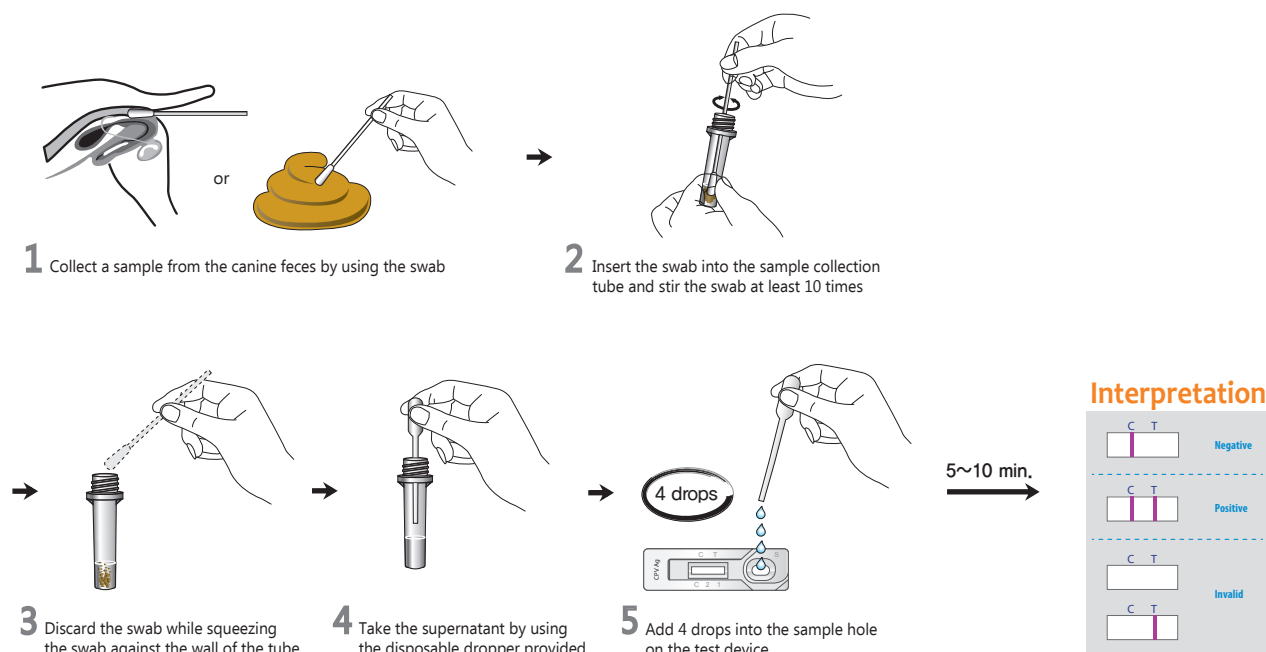
- Anigen Rapid CPV test device
- Sample collection tube containing assay diluents
- Disposable swab
- Disposable dropper

Special Features :

- Detection of pathogenic CPV subtypes (CPV 2, 2a, 2b & 2c)
- One-step testing procedure : Quick & Accurate
- High sensitivity and specificity
- Sensitivity : 100% vs. PCR
- Specificity : 98.8% vs. PCR



Test Procedure



Ordering Information

Cat. No.	Description	Type	Pack size
RG11-01	CPV Ag	Device	10 Tests/Kit

Anigen Rapid CCV Ag

General Information

Purpose : Detection of Canine Corona virus antigen

Principle : Immunochromatographic assay

Specimen : Canine feces

Materials provided :

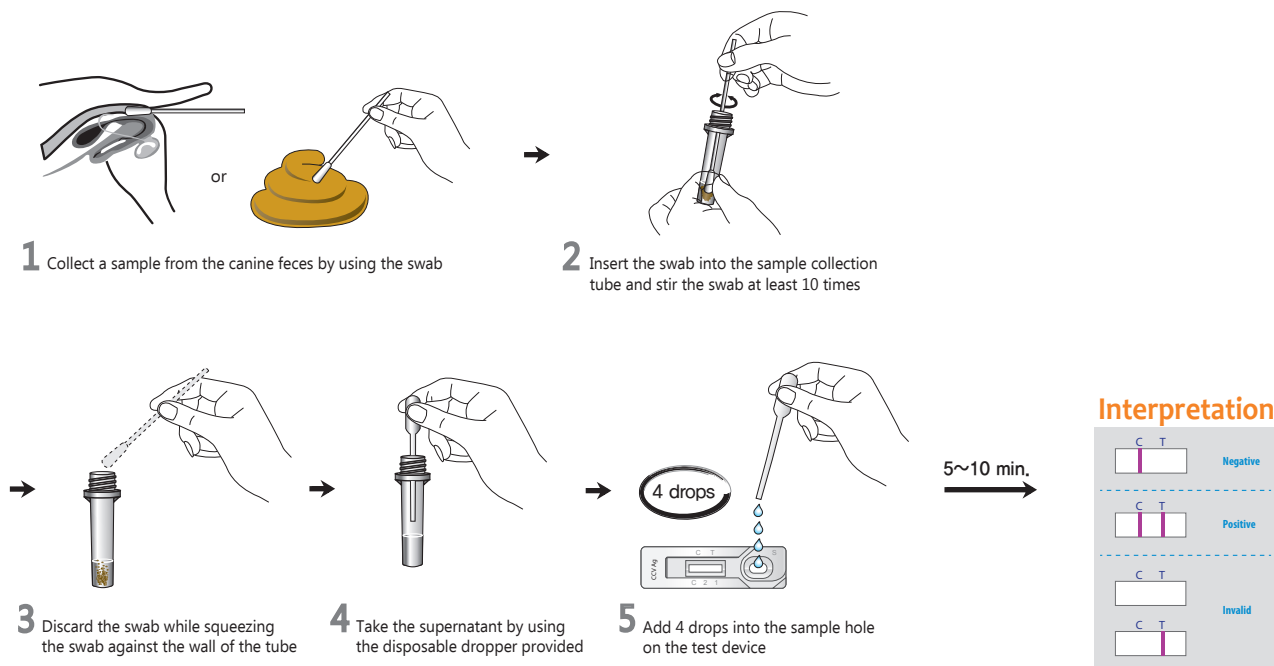
- Anigen Rapid CCV test device
- Sample collection tube containing assay diluents
- Disposable swab
- Disposable dropper

Special Features :

- World's first CCV Ag rapid test
- One-step testing procedure : Quick & Accurate
- High sensitivity and specificity
- Sensitivity : 93.1% vs. PCR
- Specificity : 97.5% vs. PCR



Test Procedure



Ordering Information

Cat. No.	Description	Type	Pack size
RG11-04	CCV Ag	Device	10 Tests/Kit

CPV/CCV Ag

General Information

Purpose : Detection of Canine Parvo virus and Corona virus antigen

Principle : Immunochromatographic assay

Specimen : Canine feces

Materials provided :

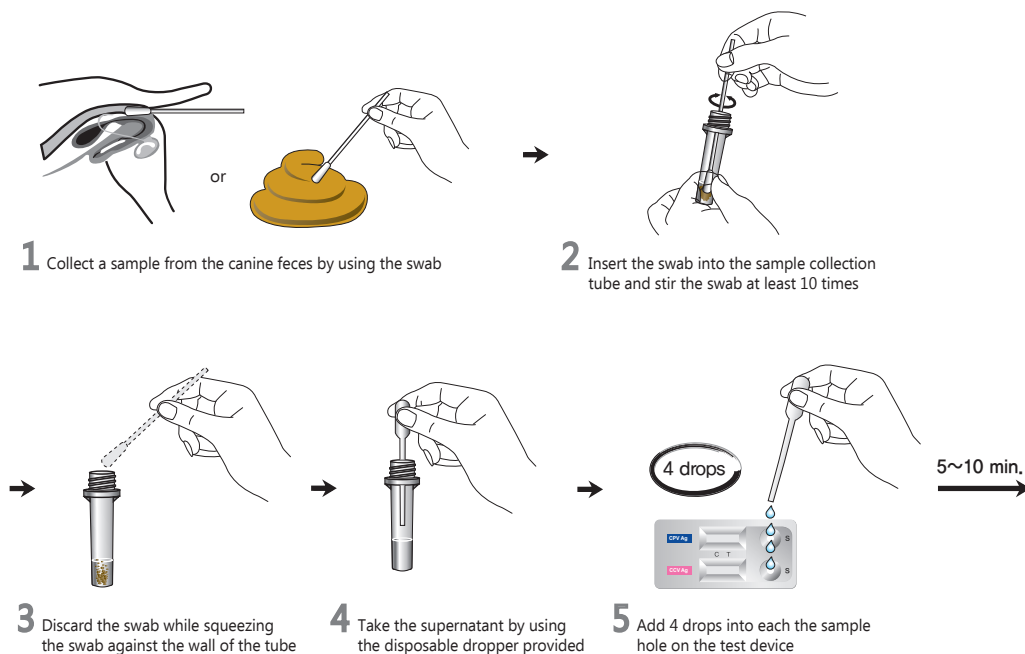
- Anigen Rapid CPV/CCV test device
- Sample collection tube containing assay diluents
- Disposable swab
- Disposable dropper

Special Features :

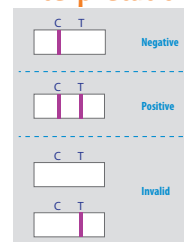
- Simultaneous detection of CPV and CCV with one specimen preparation
- One-step testing procedure : Quick & Accurate
- High sensitivity and specificity



Test Procedure



Interpretation



Ordering Information

Cat. No.	Description	Type	Pack size
RG11-05	CPV/CCV Ag	Dual Device	10 Tests/Kit

Giardia Ag

General Information

Purpose : Detection of vegetative stages and cysts of Giardiasis

Principle : Immunochromatographic assay

Specimen : Canine feces

Materials provided :

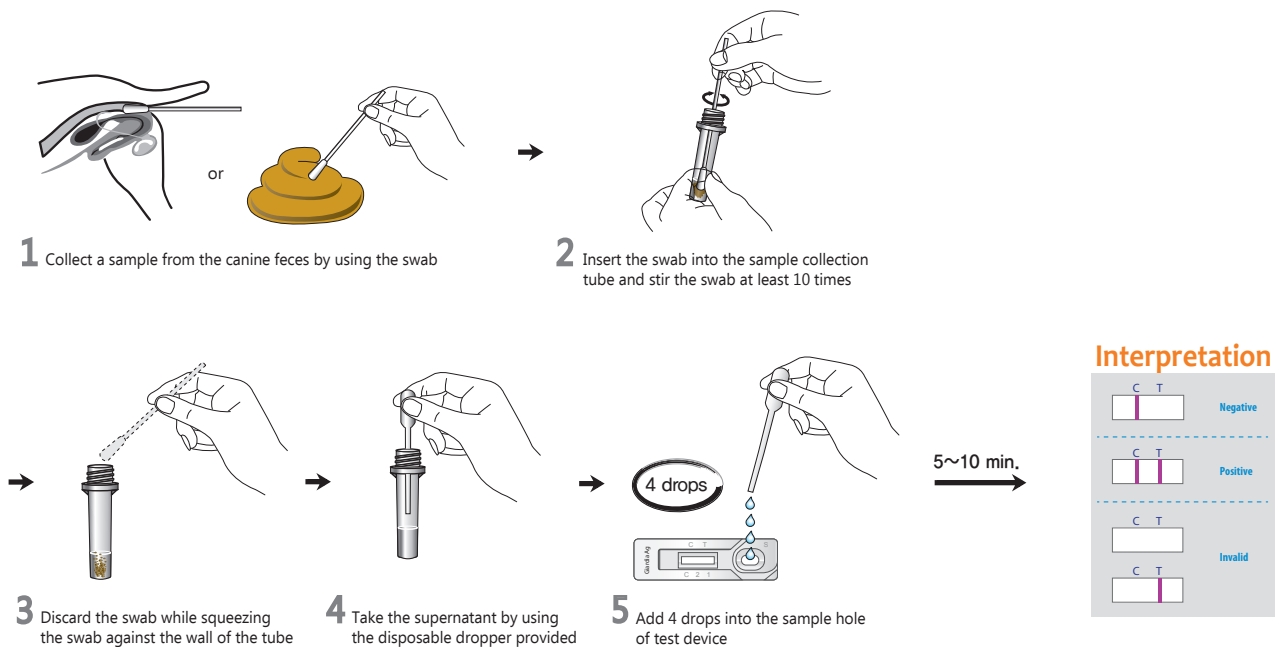
- Anigen Rapid Giardia test device
- Sample collection tube containing assay diluents
- Disposable swab
- Disposable dropper

Special Features :

- Able to detect the pathogen in both dogs and cats
- One-step testing procedure : Quick & Accurate
- High sensitivity and specificity
- Detection limit : 125 cysts/100ml of feces



Test Procedure



Ordering Information

Cat. No.	Description	Type	Pack size
RG18-04	Giardia Ag	Device	10 Tests/Kit

CPV/CCV/Giardia Ag

General Information

Purpose : Detection of Canine Parvo, Corona and Giardia antigen

Principle : Immunochromatographic assay

Specimen : Canine feces

Materials provided :

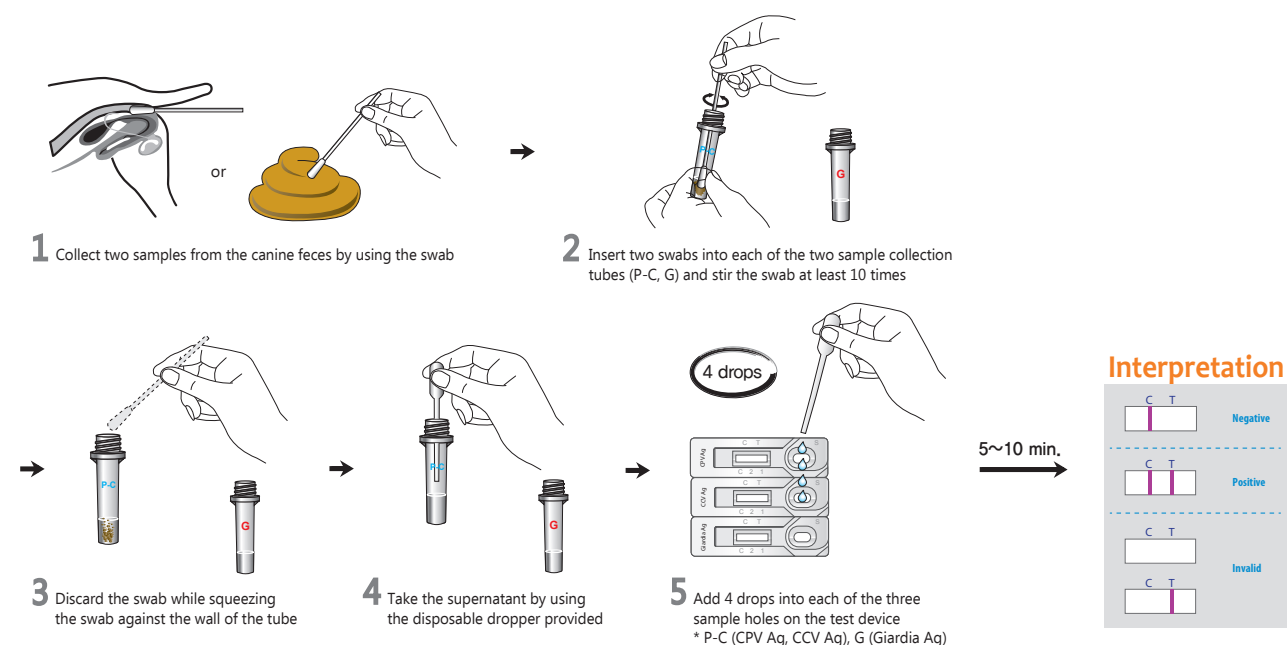
- Anigen Rapid CPV/CCV/Giardia test device
- Two kinds of sample collection tubes containing assay diluents
- Disposable swab
- Disposable dropper

Special Features :

- Simultaneous detection of CPV, CCV and Giardia
- One-step testing procedure : Quick & Accurate
- High sensitivity and specificity



Test Procedure



Ordering Information

Cat. No.	Description	Type	Pack size
RG11-12	CPV/CCV/Giardia Ag	Triple Device	5 Tests/Kit

CDV Ag

General Information

Purpose : Detection of Canine Distemper Virus antigen

Principle : Immunochromatographic assay

Specimen : Conjunctiva (Recommended), urine, serum or plasma

Materials provided :

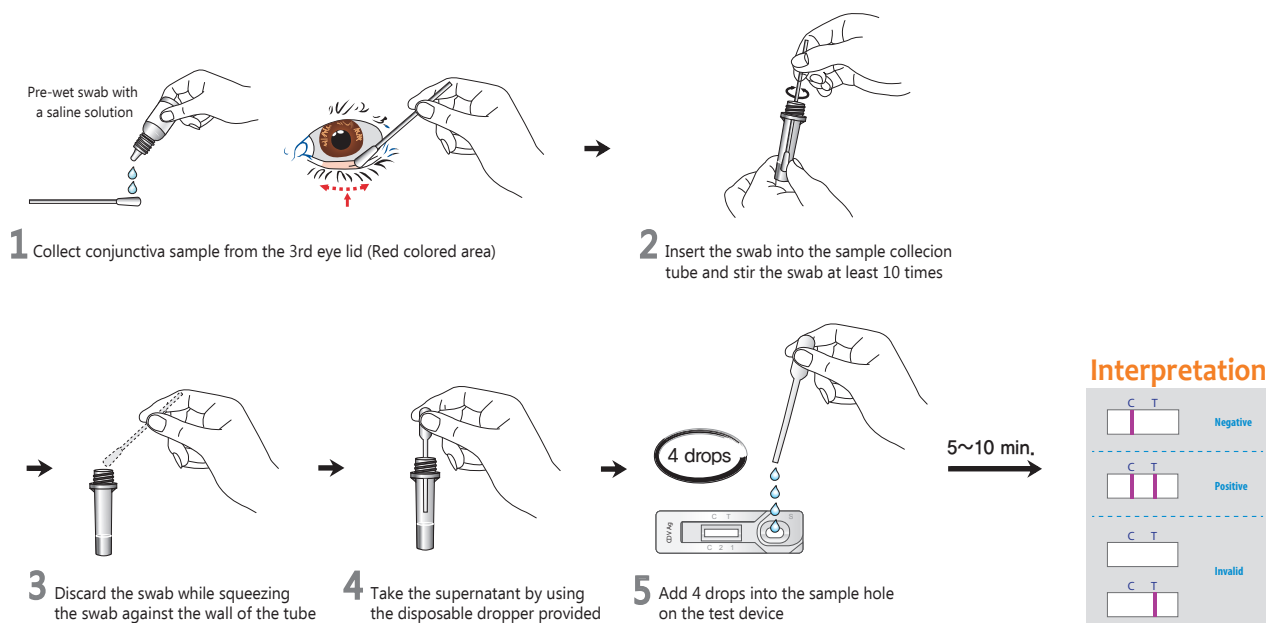
- Anigen Rapid CDV test device
- Sample collection tube containing assay diluents
- Disposable swab
- Disposable dropper

Special Features :

- One-step testing procedure : Quick & Accurate
- High sensitivity and specificity
- Sensitivity : 100 % vs. Nested PCR
- Specificity : 98.5 % vs. Nested PCR



Test Procedure



Ordering Information

Cat.No.	Description	Type	Pack size
RG11-03	CDV Ag	Device	10 Tests/Kit

CIV Ag

General Information

Purpose : Detection of Canine Influenza virus antigen

Principle : Immunochromatographic assay

Specimen : Nasal fluid

Materials provided :

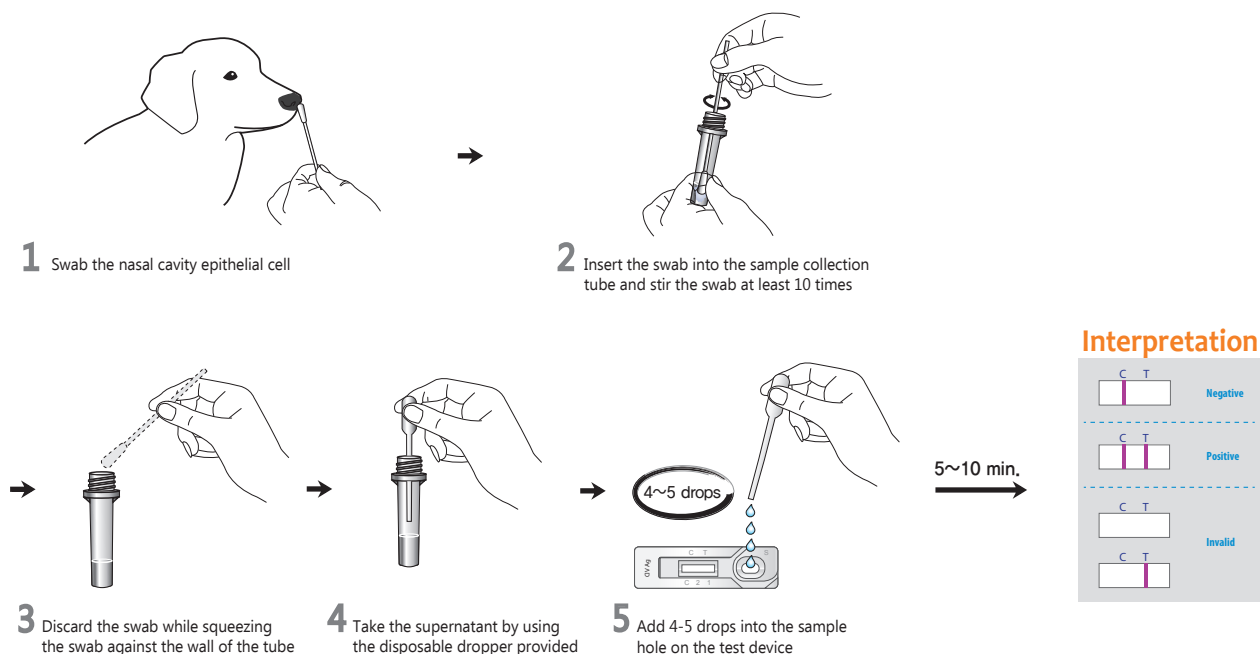
- Anigen Rapid CIV test device
- Sample collection tube containing assay diluents
- Disposable swab
- Disposable dropper

Special Features :

- Detection of Canine influenza virus H3 strain antigen
- One-step testing procedure : Quick & Accurate
- High sensitivity and specificity
- Sensitivity : 90 % vs. Real Time -PCR
- Specificity : 100 % vs. Real Time -PCR



Test Procedure



Ordering Information

Cat. No.	Description	Type	Pack size
RG11-07	CIV Ag	Device	5 Tests/Kit

CDV/CAV Ag

General Information

Purpose : Detection of Canine Distemper virus and Adeno virus antigen

Principle : Immunochromatographic assay

Specimen : CDV Ag - Conjunctiva, CAV Ag - Nasal fluid

Materials provided :

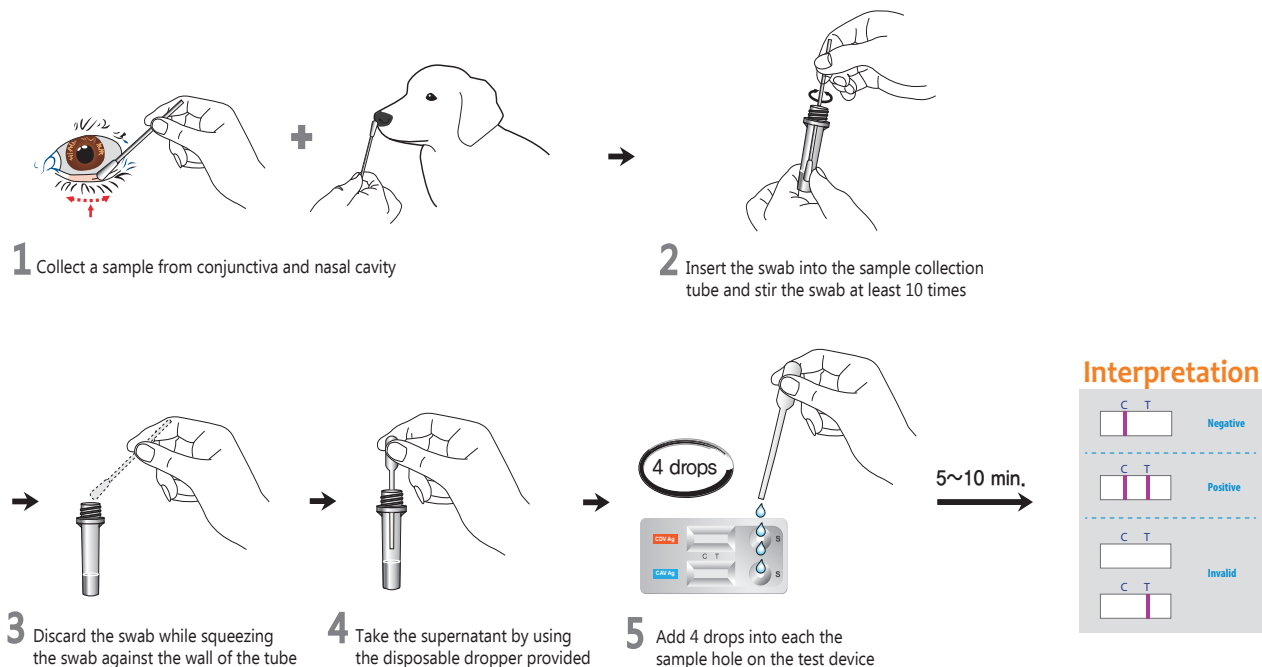
- Anigen Rapid CDV/CAV test device
- Sample collection tube containing assay diluents
- Disposable swab
- Disposable dropper

Special Features :

- Simultaneous detection of CDV and CAV with one specimen preparation
- One-step testing procedure : Quick & Accurate
- High sensitivity and specificity



Test Procedure



Ordering Information

Cat. No.	Description	Type	Pack size
RG11-08	CDV/CAV Ag	Dual Device	10 Tests/Kit

CIRD-3 Ag

General Information

Purpose : Detection of Canine Infectious Respiratory Disease (CDV, CAV and CIV)

Principle : Immunochromatographic assay

Specimen : CDV Ag - Conjunctiva, CAV & CIV Ag - Nasal fluid

Materials provided :

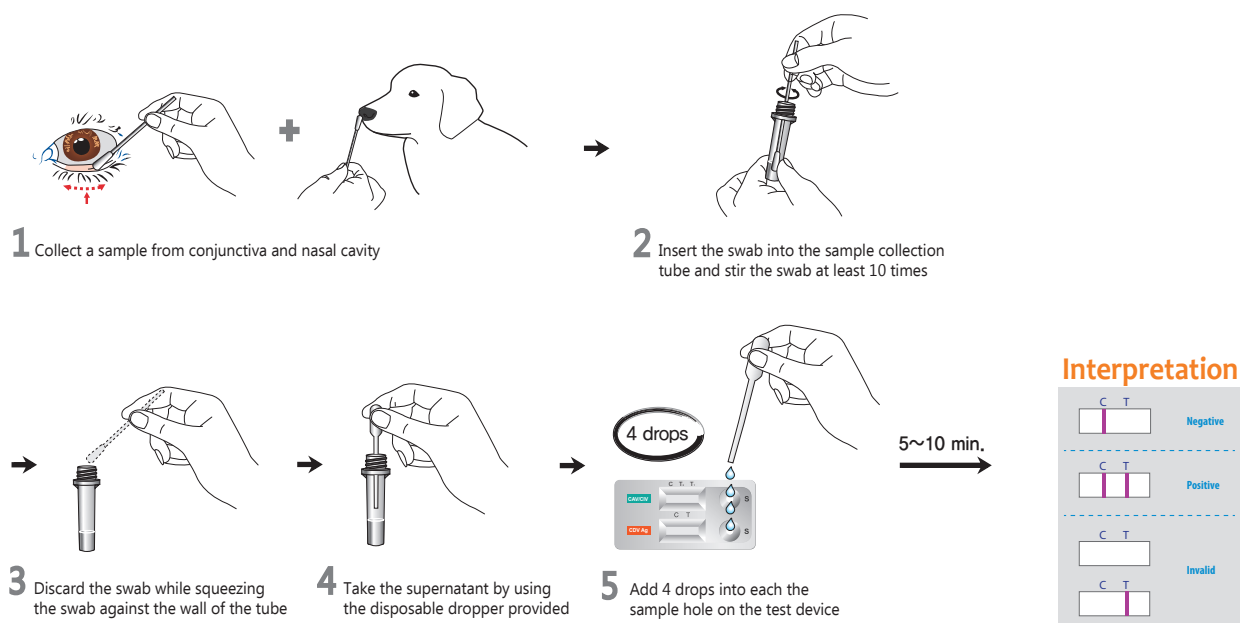
- Anigen Rapid CIRD-3 test device
- Sample collection containing assay diluents
- Disposable swab
- Disposable dropper

Special Features :

- Simultaneous detection of CDV, CAV and CIV
- with one specimen preparation
- One-step testing procedure : Quick & Accurate
- High sensitivity and specificity



Test Procedure



Ordering Information

Cat. No.	Description	Type	Pack size
RG11-09	CIRD-3 Ag	Dual Device	10 Tests/Kit

HW Ag 2.0

General Information

Purpose : Detection of Canine *Dirofilaria immitis* antigen

Principle : Immunochromatographic assay

Specimen : Whole blood, plasma or serum

Materials provided :

- Anigen Rapid CHW test device
- Anticoagulant tube
- Disposable dropper

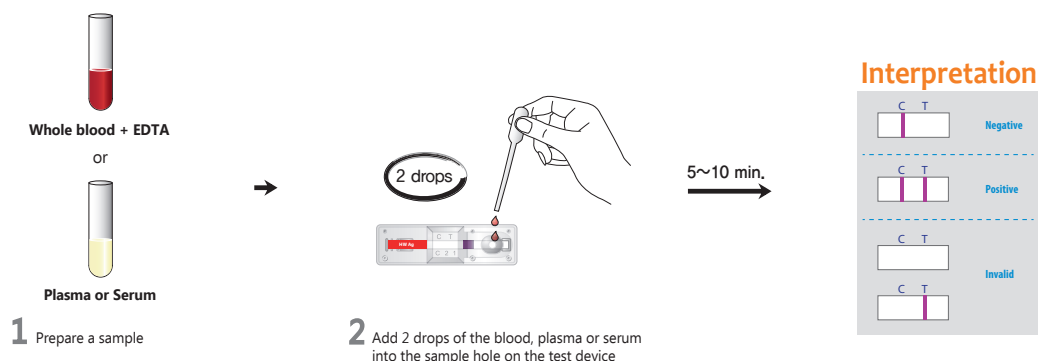
Special Features :

- Unique antibody system in the Anigen Canine Heartworm Ag test kit
- Diagnosis of infections with up to a burden of 2 heartworms of any type including Male, Adult female, Immature female & Non-propagated female worms
- One-step testing procedure : Quick & Accurate
- High sensitivity and specificity
- Sensitivity : 94.4 % vs. Necropsy, Specificity : 100 % vs. Necropsy



The earliest phase of heartworm antigen and microfilariae that can be detected is about 5 and 6 months post infection, respectively. Whether screening a population of asymptomatic dogs or seeking verification of a suspected heartworm infection, antigen testing is the most sensitive diagnostic method. Microfilaria testing is complementary and may be done in tandem with antigen testing to determine whether this life cycle stage is also present in dogs that are antigenemic.

Test Procedure



Ordering Information

Cat. No.	Description	Type	Pack size
RG11-02	CHW Ag	Device	10 Tests/Kit

Leishmania Ab

General Information

Purpose : Detection of *Leishmania infantum* antibody

Principle : Immunochromatographic assay

Specimen : Whole blood, plasma or serum

Materials provided :

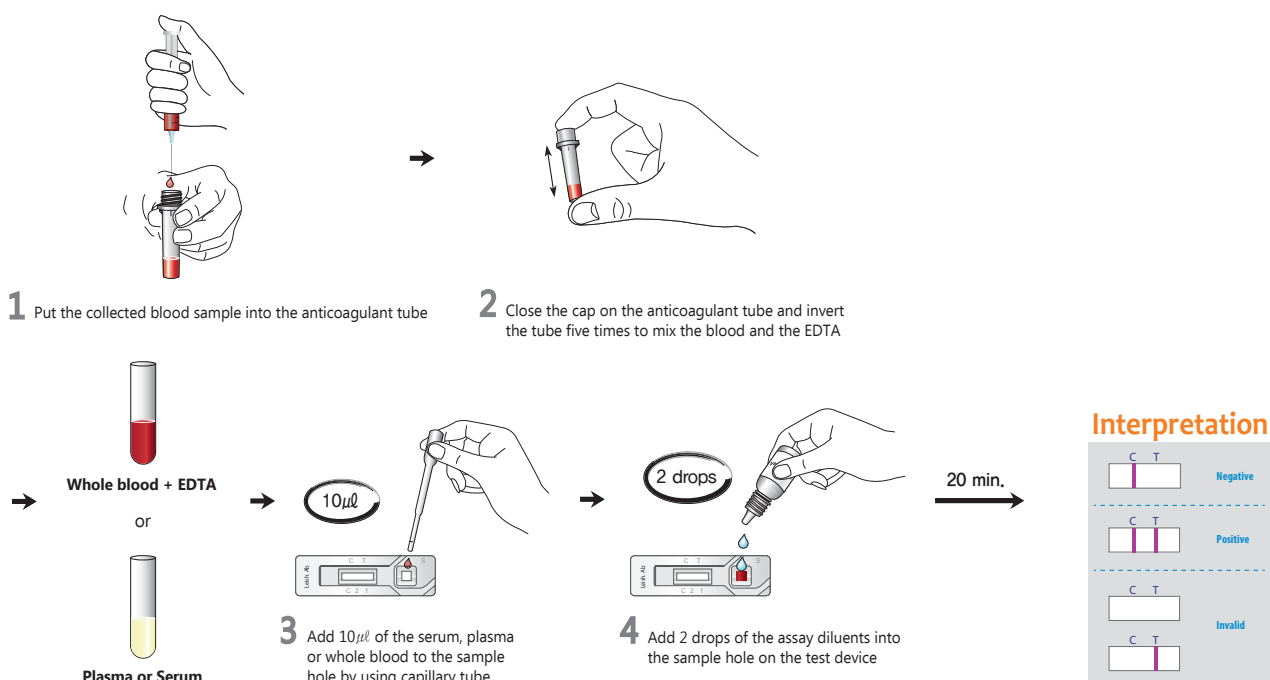
- Anigen Rapid Leishmania test device
- Assay diluents dropping bottle
- Anticoagulant tube
- Disposable capillary tube

Special Features :

- One-step testing procedure : Quick & Accurate
- High sensitivity and specificity
- Sensitivity : 95.6 % vs. IFA
- Specificity : 98 % vs. IFA



Test Procedure



Ordering Information

Cat. No.	Description	Type	Pack size
RB21-04	Leishmania Ab	Device	10 Tests/Kit

E.canis Ab

General Information

Purpose : Detection of *Ehrlichia Canis* antibody

Principle : Immunochromatographic assay

Specimen : Whole blood, plasma or serum

Materials provided :

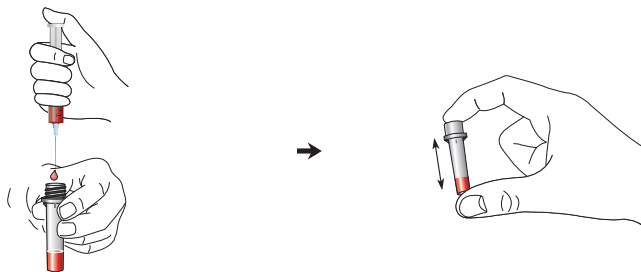
- Anigen Rapid E.canis test device
- Assay diluents dropping bottle
- Anticoagulant tube
- Disposable capillary tube

Special Features :

- One-step testing procedure : Quick & Accurate
- High sensitivity and specificity
- Sensitivity : 97.6 % vs. IFA
- Specificity : 99.0 % vs. IFA

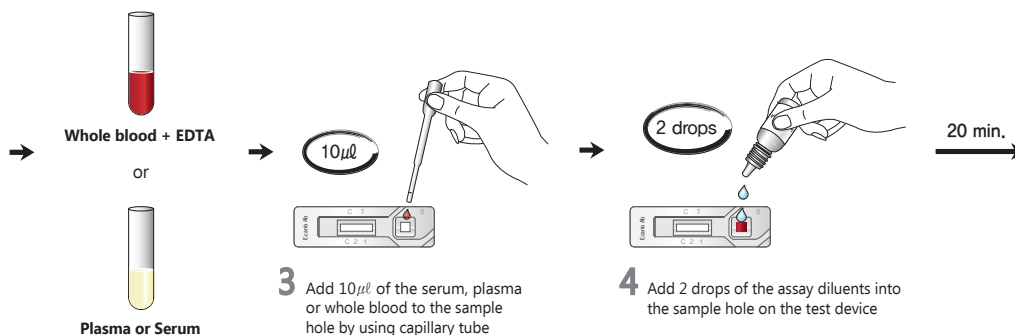


Test Procedure

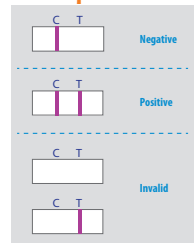


1 Put the collected blood sample into the anticoagulant tube

2 Close the cap on the anticoagulant tube and invert the tube five times to mix the blood and the EDTA



Interpretation



Ordering Information

Cat. No.	Description	Type	Pack size
RB21-05	E.canis Ab	Device	10 Tests/Kit

Rabies Ag

General Information

Purpose : Detection of Rabies virus antigen

Principle : Immunochromatographic assay

Specimen : 10 % brain homogenates

Materials provided :

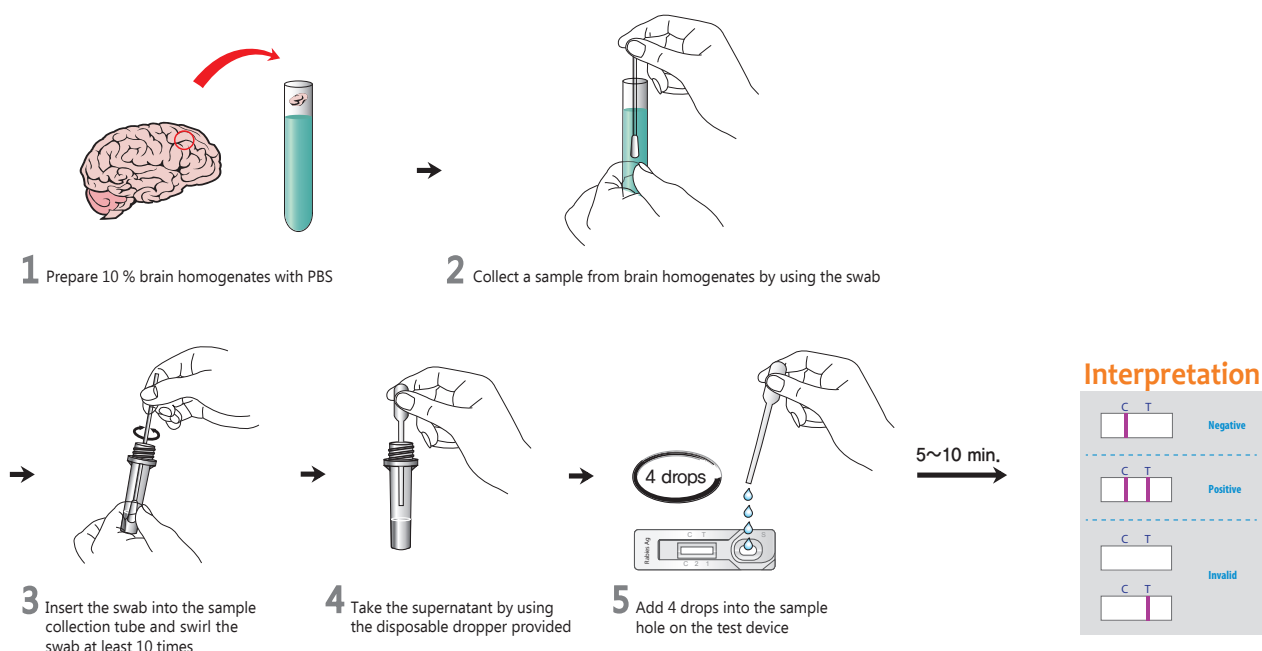
- Anigen Rapid Rabies test device
- Sample collection tube containing assay diluents
- Disposable swab
- Disposable dropper

Special Features :

- One-step testing procedure : Quick & Accurate
- High sensitivity and specificity
- Sensitivity : 94.4 % vs. RT-PCR, 100 % vs.FAT
- Specificity : 100 % vs. RT-PCR, 100 % vs.FAT



Test Procedure



Ordering Information

Cat. No.	Description	Type	Pack size
RG18-01	Rabies Ag	Device	10 Tests/Kit

C.Brucella Ab

General Information

Purpose : Detection of Canine Brucella antibody

Principle : Immunochromatographic assay

Specimen : Whole blood, plasma or serum

Materials provided :

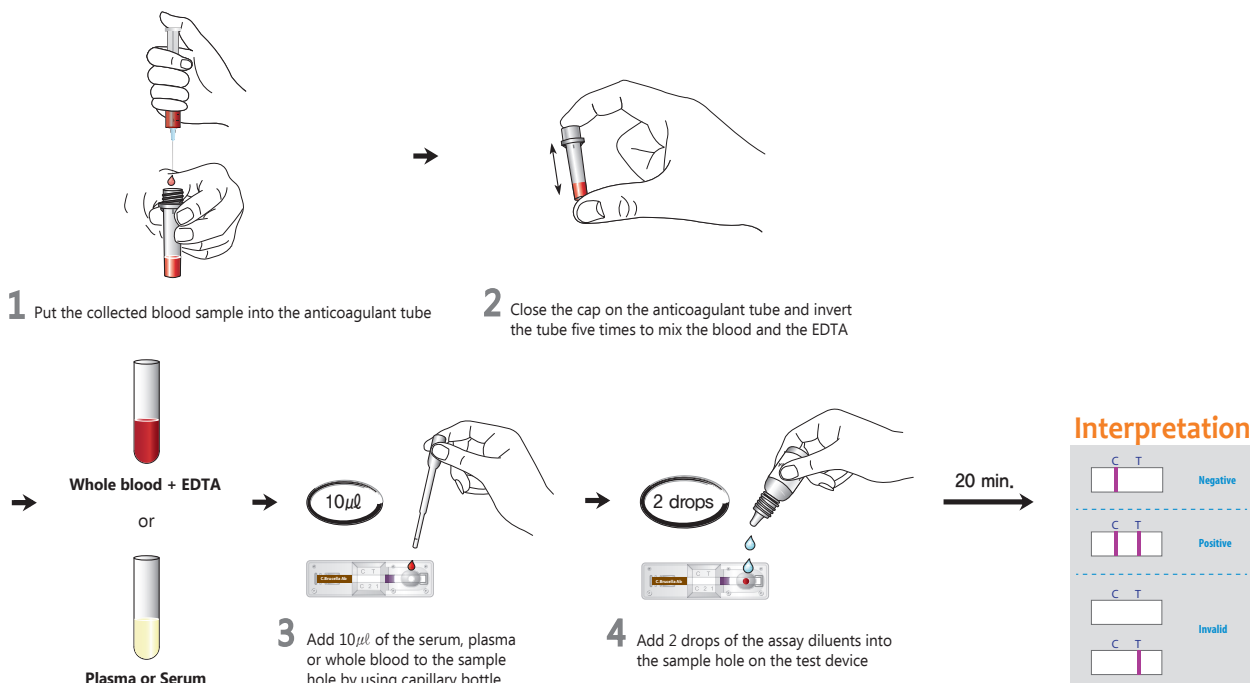
- Anigen Rapid C.Brucella test device
- Assay diluents dropping bottle
- Anticoagulant tube
- Disposable capillary tube

Special Features :

- One-step testing procedure : Quick & Accurate
- High sensitivity and specificity
- Sensitivity : 93 % vs. blood culture
- Specificity : 100 % vs. blood culture



Test Procedure



Ordering Information

Cat. No.	Description	Type	Pack size
RB21-03	C.Brucella Ab	Device	10 Tests/Kit

Total Ig E (Allergy indicator test)

General Information

Purpose : Detection of Total Ig E

Principle : Immunochromatographic assay

Specimen : plasma or serum

Materials provided :

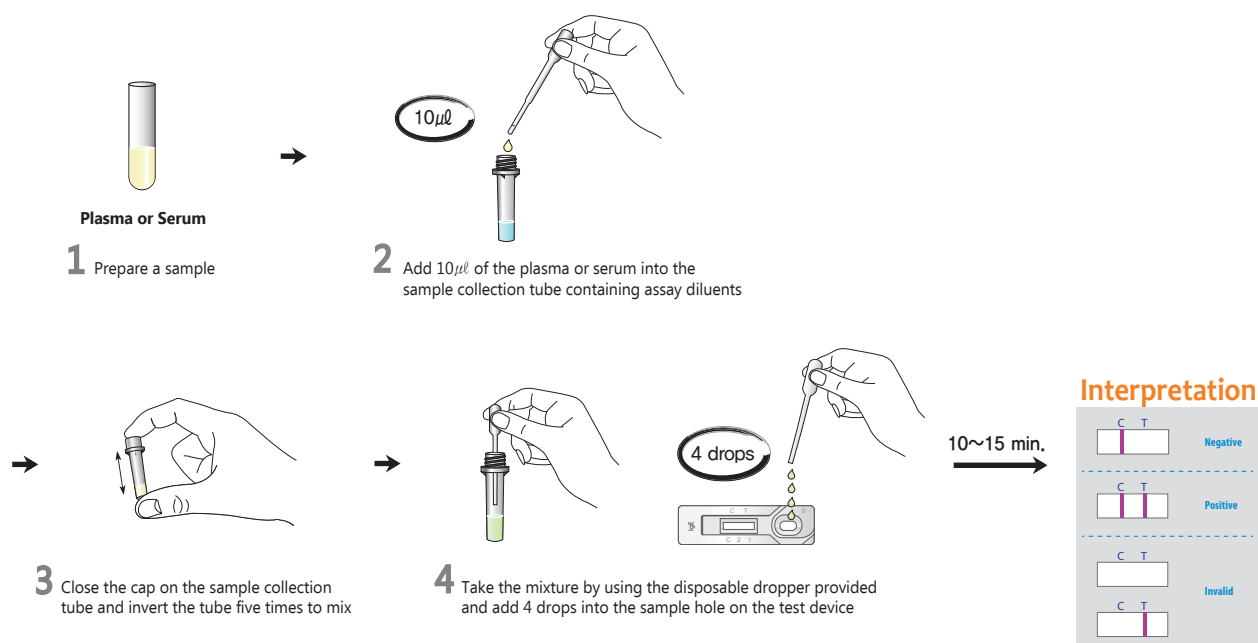
- Anigen Rapid Total Ig E test device
- Assay diluents dropping bottle
- Disposable capillary tube
- Disposable dropper

Special Features :

- Canine allergy indicator test
- One-step testing procedure : Quick & Accurate
- High sensitivity and specificity
 - Sensitivity : 97.1% vs. ELISA
 - Specificity : 98.5% vs. ELISA



Test Procedure



Ordering Information

Cat. No.	Description	Type	Pack size
RB21-10	Total Ig E	Device	10 Tests/Kit

Anaplasma Ab

General Information

Purpose : Detection of *Anaplasma phagocytophilum* antibody

Principle : Immunochromatographic assay

Specimen : Whole blood, plasma or serum

Materials provided :

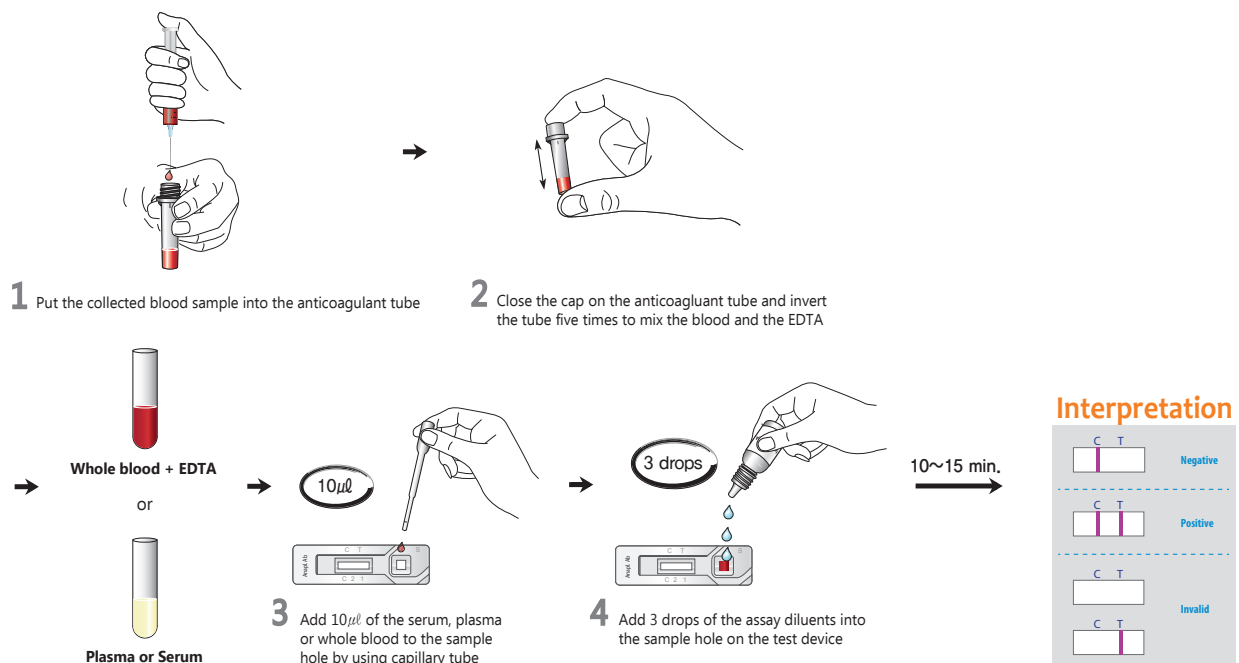
- Anigen Rapid Anaplasma test device
- Assay diluents dropping bottle
- Anticoagulant tube
- Disposable capillary tube

Special Features :

- One-step testing procedure : Quick & Accurate
- High sensitivity and specificity
 - Sensitivity : 88.5% vs. IFA
 - Specificity : 97.1% vs. IFA



Test Procedure



Ordering Information

Cat. No.	Description	Type	Pack size
RB21-21	Anaplasma Ab	Device	10 Tests/Kit

Lyme Ab

General Information

Purpose : Detection of *Borrelia burgdorferi* antibody

Principle : Immunochromatographic assay

Specimen : Whole blood, plasma or serum

Materials provided :

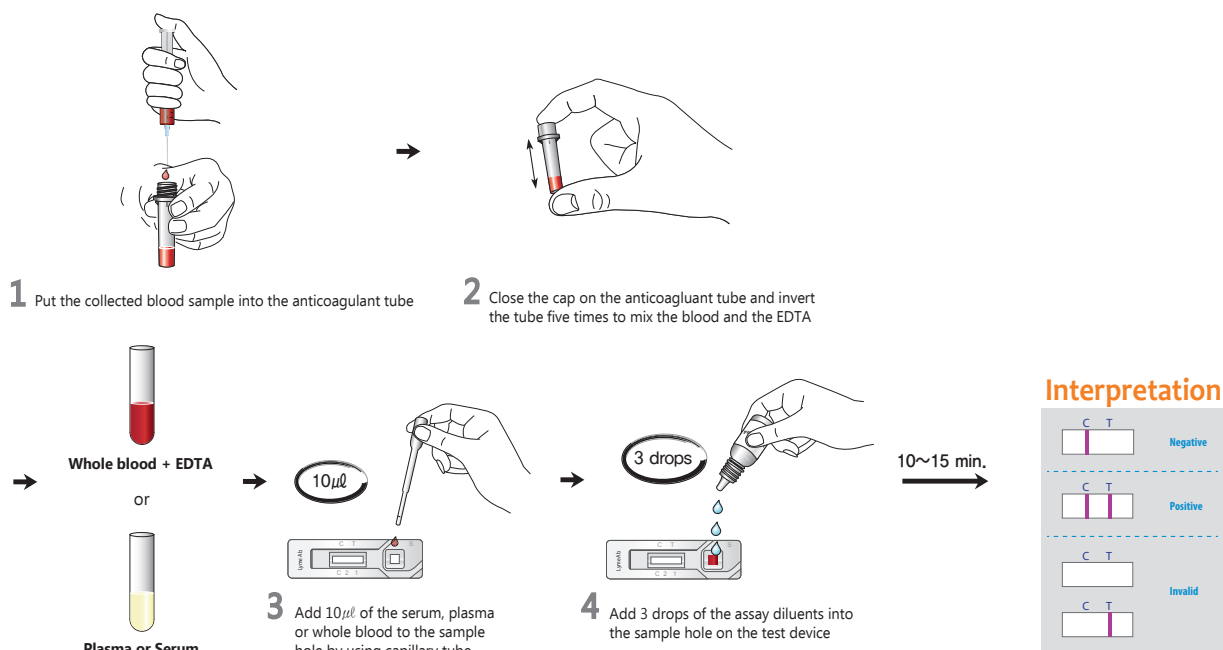
- Anigen Rapid Borrelia test device
- Assay diluents dropping bottle
- Anticoagulant tube
- Disposable capillary tube

Special Features :

- One-step testing procedure : Quick & Accurate
- High sensitivity and specificity
 - Sensitivity : 93%
 - Specificity : 98%



Test Procedure



Ordering Information

Cat. No.	Description	Type	Pack size
RB21-22	Lyme Ab	Device	10 Tests/Kit

Caniv-4

General Information

Purpose : Detection of *Dirofilaria immitis* antigen
Ehrlichia canis antibody
Borrelia burgdorferi antibody
Anaplasma phagocytophilum/*Anaplasma platys* antibody

Principle : Immunochromatographic assay

Specimen : Whole blood, plasma or serum

Materials provided :

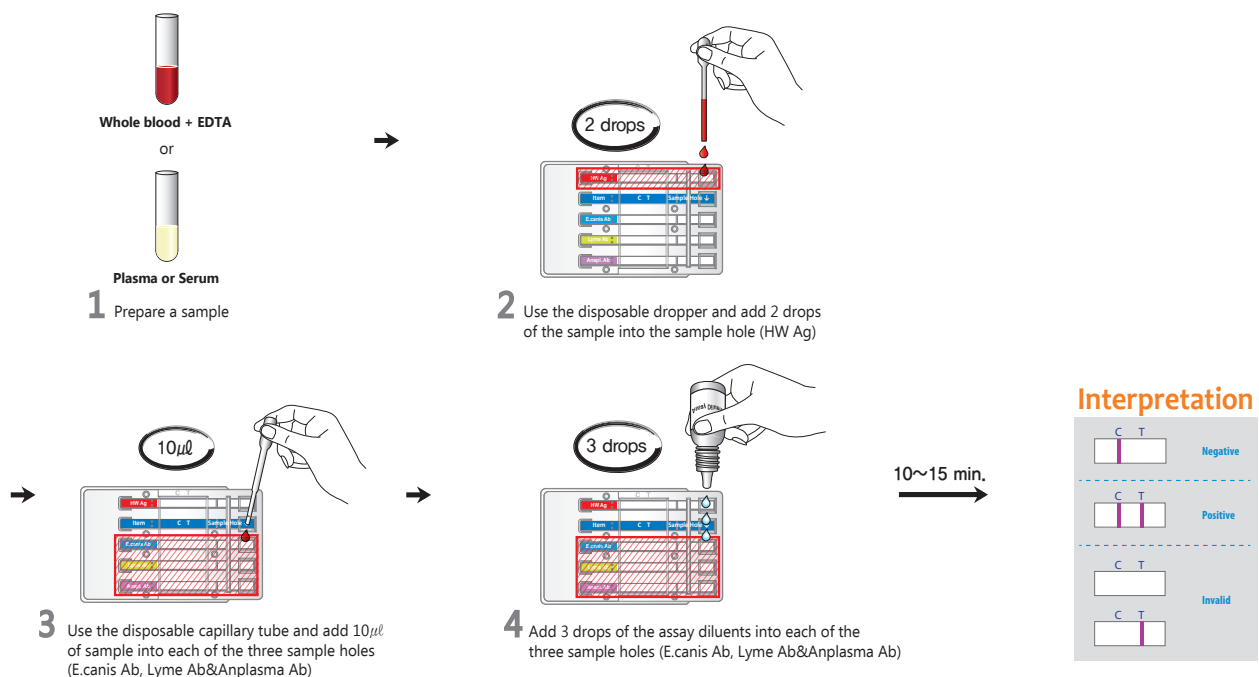
- Anigen Rapid Caniv-4 test device
- Assay diluents dropping buffer
- Anticoagulant tube
- Disposable capillary tube

Special Features :

- Simultaneous detection of four kinds of Vector Borne diseases
- One-step testing procedure : Quick & Accurate
- High sensitivity and specificity



Test Procedure



Ordering Information

Cat. No.	Description	Type	Pack size
RB21-20	Caniv-4		10 Tests/Kit

E.canis/Anaplasma Ab

General Information

Purpose : Detection of *Ehlichia canis* and *Anaplasma phogocytophilum*/*Anaplasma platys*

Principle : Immunochromatographic assay

Specimen : Whole blood, plasma or serum

Materials provided :

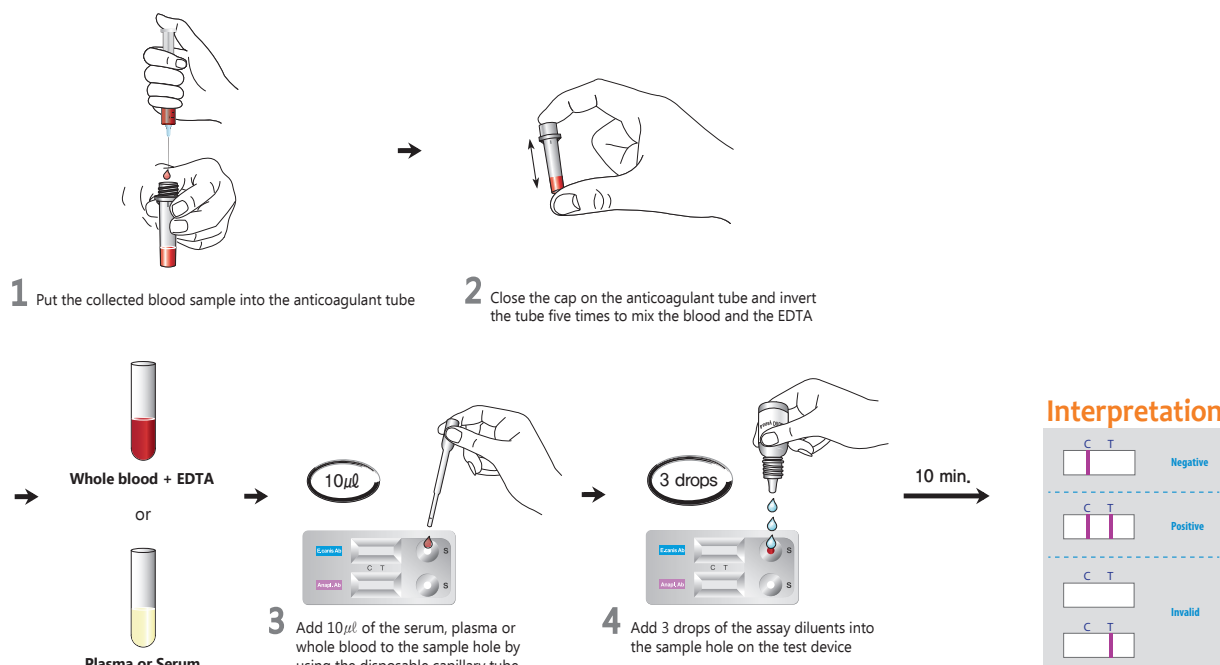
- Anigen Rapid E.canis/Anaplsma Ab test device
- Assay diluents dropping bottle
- Anticoagulant tube
- Disposable capillary tube

Special Features :

- Simultaneous detection of E.canis Ab and Anaplasma Ab with one specimen preparation
- One-step testing procedure : Quick & Accurate
- High sensitivity and specificity



Test Procedure



Ordering Information

Cat. No.	Description	Type	Pack size
RB21-23	E.canis/Anaplasma Ab	Dual Device	10 Tests/Kit

FHW Ag/Ab

General Information

Purpose : Detection of Feilne heartworm antigen and antibody

Principle : Immunochromatographic assay

Specimen : Whole blood, plasma or serum

Materials provided :

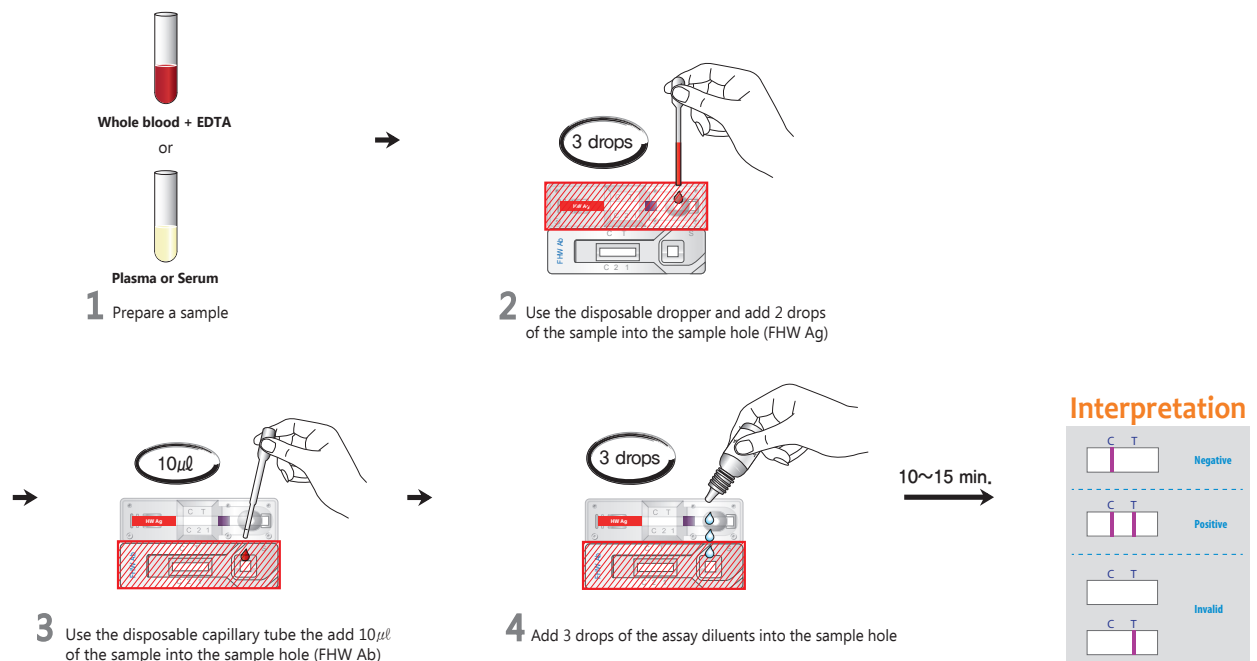
- Anigen Rapid FHW Ag/Ab test device
- Assay diluents dropping bottle
- Anticoagulant tube
- Disposable capillary tube

Special Features :

- Simultaneous detection of FHW Ag and Ab with one specimen preparation
- One-step testing procedure : Quick & Accurate
- High sensitivity and specificity



Test Procedure



Ordering Information

Cat. No.	Description	Type	Pack size
RC22-05	FHW Ag/Ab	Dual Device	10 Tests/Kit

FIV Ab/FeLV Ag

General Information

Purpose : Simultaneous detection of Feline Immunodeficiency virus antibody and Feline Leukemia Virus antigen

Principle : Immunochromatographic assay

Specimen : Whole blood, plasma or serum

Materials provided :

- Anigen Rapid FIV Ab / FeLV Ag test device
- Assay diluents dropping bottle
- Anticoagulant tube
- Disposable capillary tube

Special Features :

- One-step testing procedure : Quick & Accurate
- High sensitivity and specificity
 - Sensitivity : FIV 96.8 % vs. Western Blot, FeLV 94.7 % vs. Virus isolation
 - Specificity : FIV 99.6 % vs. Western Blot, FeLV 99.7 % vs. Virus isolation



◆ FIV Ab test

A cat in the acute phase of infection may be antibody negative, and retesting within 6~8 weeks is warranted to establish a diagnosis in cats with a recent history that puts them at risk of exposure.

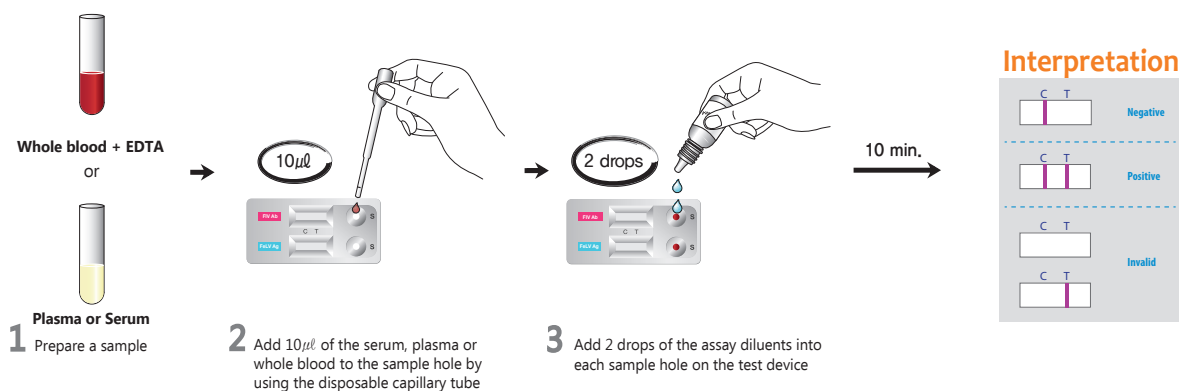
◆ FeLV Ag test

To completely eliminate any risk to an established household when bringing in a new cat. A follow-up test should be performed at least 90 days after the initial test or possible exposure to FeLV, because cats may be in the early stage of infection at the time of the first test.

◆ Kitten

FIV Ab tests have to be interpreted carefully in kittens less than 6 months of age. Kittens up to 12 weeks of age can have passively acquired anti-FIV antibody from mothers that are infected or have been vaccinated. If the kittens have a FIV positive result, the kitten should be retested after 8~12 weeks. If FIV negative, the kitten is unlikely to be infected, if still positive it is probably infected.

Test Procedure



Ordering Information

Cat. No.	Description	Type	Pack size
RC12-04	FIV Ab/FeLV Ag	Dual Device	10 Tests/Kit

FPV Ag

General Information

Purpose : Detection of Feline Parvo virus antigen

Principle : Immunochromatographic assay

Specimen : Feline feces

Materials provided :

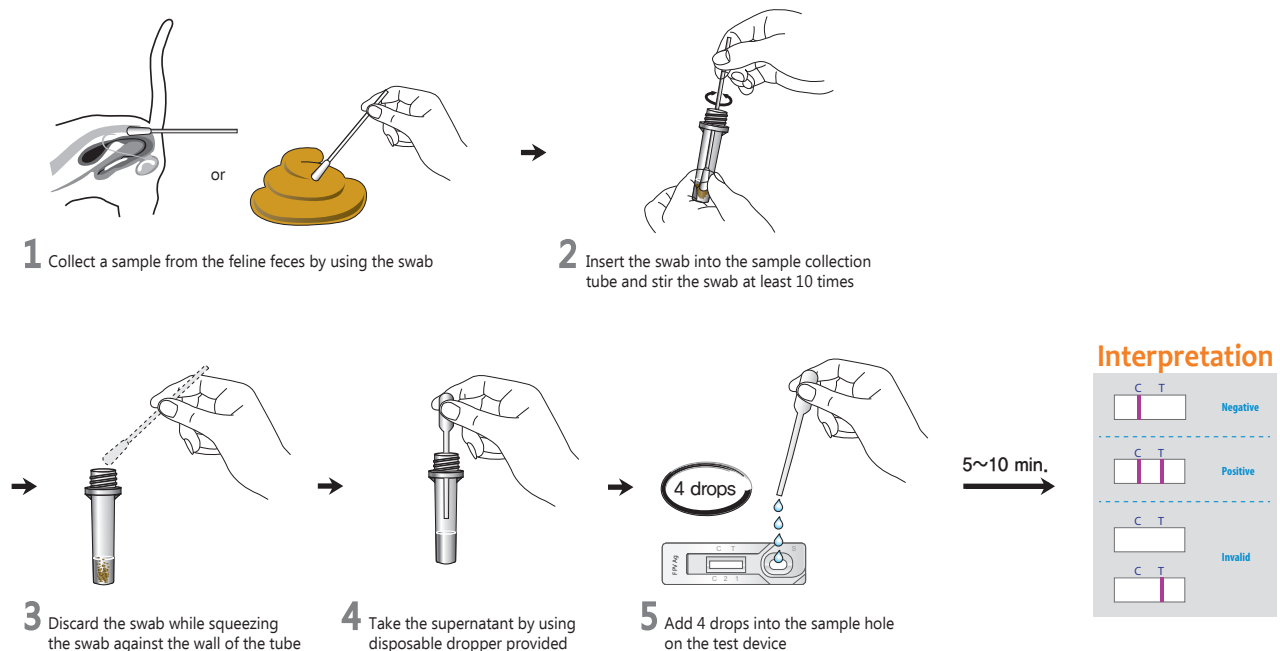
- Anigen Rapid FPV test device
- Sample collection tube containing assay diluents
- Disposable swab
- Disposable dropper

Special Features :

- One-step testing procedure : Quick & Accurate
- High sensitivity and specificity
 - Sensitivity : 97% vs. RT-PCR
 - Specificity : 98.5% vs. RT-PCR



Test Procedure



Ordering Information

Cat. No.	Description	Type	Pack size
RG12-03	FPV Ag	Device	10 Tests/Kit

FCoV Ag

General Information

Purpose : Detection of Feline Corona virus antigen

Principle : Immunochromatographic assay

Specimen : Feline feces

Materials provided :

- Anigen Rapid FCoV test device
- Sample collection tube containing assay diluents
- Disposable swab
- Disposable dropper

Special Features :

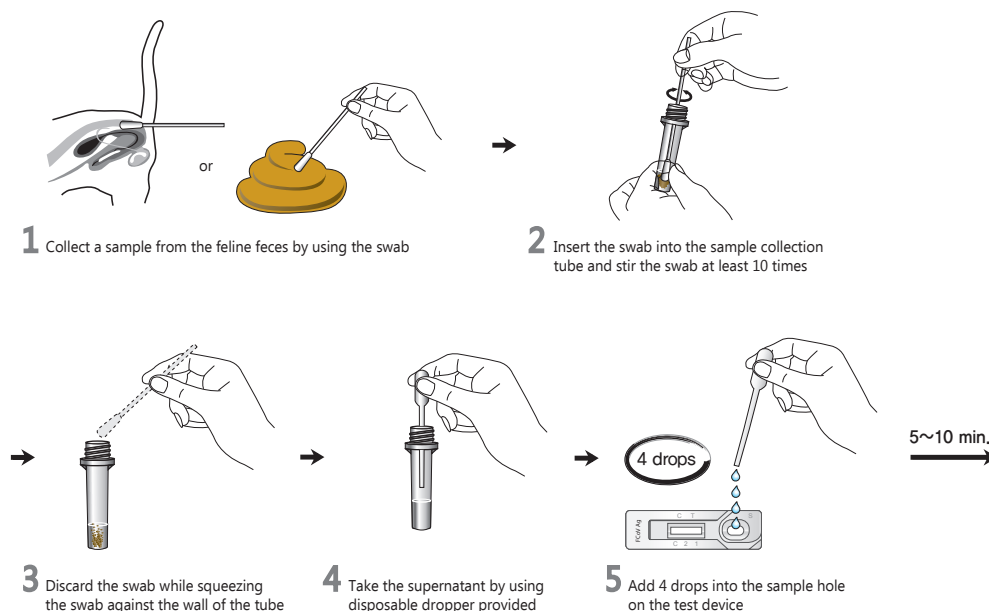
- One-step testing procedure : Quick & Accurate
- High sensitivity and specificity
 - Sensitivity : 95.5 % vs. PCR
 - Specificity : 98.8 % vs. PCR



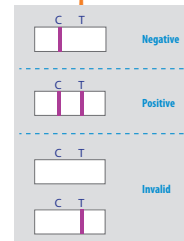
◆ **Feline infectious peritonitis ; FIP**

There are two basic forms of FIP-effusive (wet) and non effusive (dry) that have been characterized. Cats with effusive FIP usually only survive a few days-weeks at best. Cats with noneffusive FIP can survive for weeks or months, although after neurologic signs begin death usually occurs rapidly.

Test Procedure



Interpretation



Ordering Information

Cat. No.	Description	Type	Pack size
RG12-05	FCoV Ag	Device	10 Tests/Kit

FCoV Ab

General Information

Purpose : Detection of Feline Corona virus antibody

Principle : Immunochromatographic assay

Specimen : Whole blood, plasma or serum

Materials provided :

- Anigen Rapid FCoV Ab test device
- Assay diluents dropping bottle
- Anticoagulant tube
- Disposable capillary tube

Special Features :

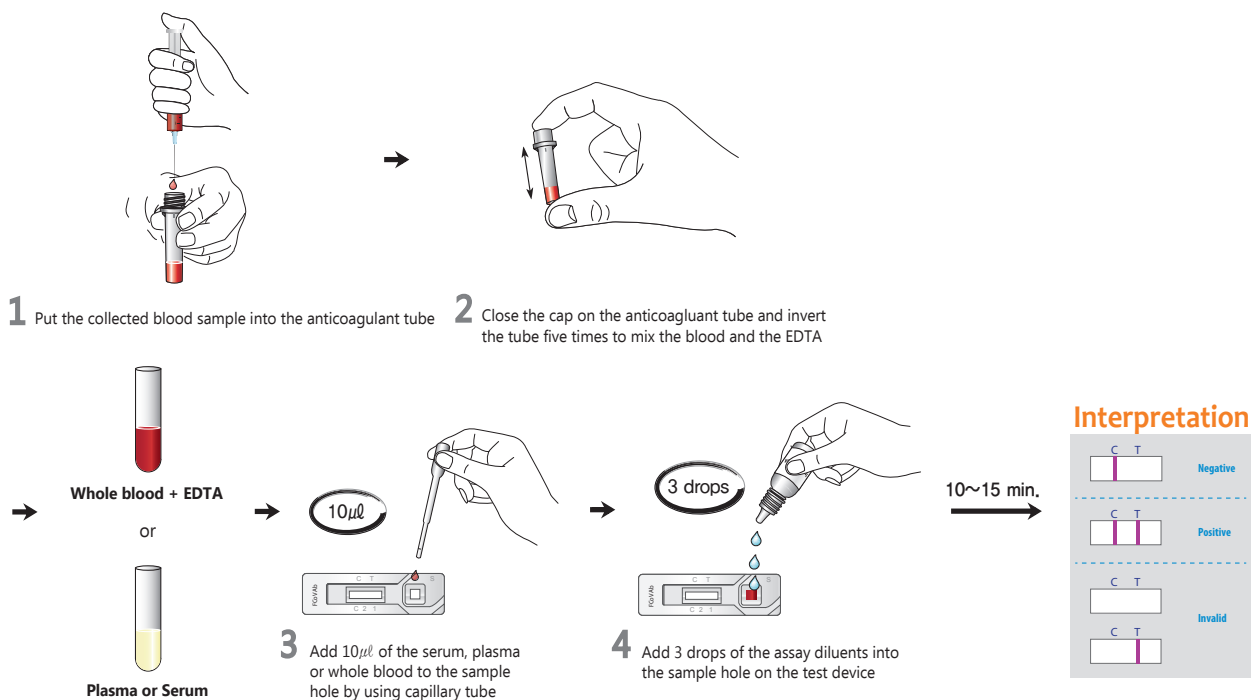
- One-step testing procedure : Quick & Accurate
- High sensitivity and specificity
 - Sensitivity : 96.0 % vs. IFA
 - Specificity : 97.9 % vs. IFA



◆ **How to do FIP diagnosis with Rapid FCoV Ab test**

- Many healthy cats and cats with conditions other than FIP are FCoV Ab positive.
- Some cats with effusive FIP appear to have low titers or are FCoV Ab negative.
- FCoV Ab testing should only be performed to determine FIP in conjunction with a compatible history, clinical signs, and examination of effusions or blood for high globulins and a low A:G ratio.

Test Procedure



Ordering Information

Cat. No.	Description	Type	Pack size
RB22-03	FCoV Ab	Device	10 Tests/Kit

Toxoplasma Ab

General Information

Purpose : Detection of *Toxoplasma gondii* antibody

Principle : Immunochromatographic assay

Specimen : Whole blood, plasma or serum

Materials provided :

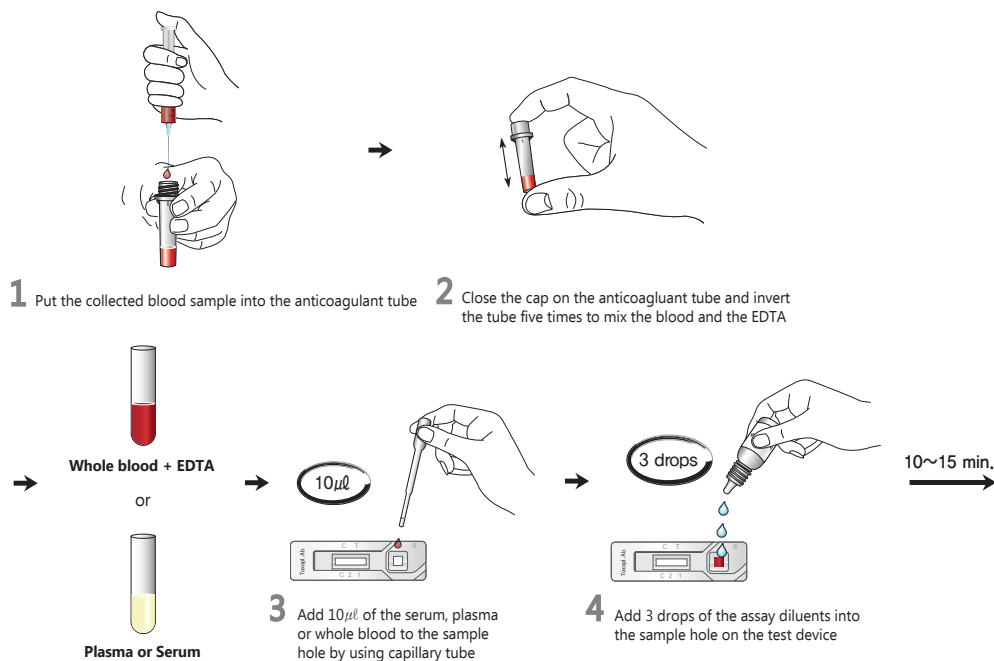
- Anigen Rapid Toxo test device
- Assay diluents dropping bottle
- Anticoagulant tube
- Disposable capillary tube

Special Features :

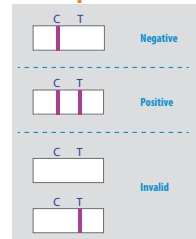
- One-step testing procedure : Quick & Accurate
- High sensitivity and specificity
 - Sensitivity : 99.9% vs. ELISA
 - Specificity : 98.7% vs. ELISA



Test Procedure



Interpretation



Ordering Information

Cat. No.	Description	Type	Pack size
RB22-06	Toxoplasma Ab	Device	10 Tests/Kit

epoc[®] Veterinary System

Feature



Results in just 30 seconds after insertion of blood sample



Easy to use



Wireless system



Portable hand-held system

Q.C Auto calibration and quality check



Test Procedure



1. Insert the test card, calibration starts automatically.



2. Scan patient ID or insert via keyboard, take sample from patient.
3. Insert blood into test.



4. Within 30 seconds the results appear on the host, ready to be transferred to the epoc data manager or to be saved on the epoc Vet.






Test Menu

pH	6.5-8.0 ph
pCO ₂	5-250 mm Hg
pO ₂	5-750 mm Hg
Na ⁺	85-180 mmol/L
K ⁺	1.5-12 mmol/L
Ca ⁺	0.25-4 mmol/L
Glu	20-700 mg/dl
Hct	10-75 %
Lac	0.0-21.0 mmol/L




cTCO ₂	1-85 mmol/L
cHCO ₃ ⁻	1-85 mmol/L
BE (ecf)	-30+30 mmol/L
BE b	-30+30 mmol/L
csO ₂	0-100%
cHgb	3.3-25 g/dl

Current available product list



Rapid

	Species	Product	Cat. No.	Type	Packing Size	Description	Sample
PET Animal		Rapid CPV Ag Test Kit	RG11-01	Device	1Test X 10/Kit	Detection of Canine Parvovirus antigen	Feces
		Rapid Canine Heartworm Ag Test Kit 2.0	RG11-02	Device	1Test X 10/Kit	Detection of Canine Heartworm antigen	Whole blood, plasma or serum
		Rapid CDV Ag Test Kit	RG11-03	Device	1Test X 10/Kit	Detection of Canine Distemper virus antigen	Conjunctiva, saliva, urine, plasma or serum
		Rapid CCV Ag Test Kit	RG11-04	Device	1Test X 10/Kit	Detection of Canine Coronavirus antigen	Feces
		Rapid CPV Ag/CCV Ag Test Kit	RG11-05	Dual Device	1Test X 10/Kit	Detection of Parvovirus antigen/Coronavirus antigen	Feces
		Rapid CIV Ag Test Kit	RG11-07	Device	1Test X 10/Kit	Detection of Canine influenza virus antigen	Conjunctiva and nasal swab
		Rapid CDV Ag/CAV Ag Test Kit	RG11-08	Dual Device	1Test X 10/Kit	Detection of Distemper antigen/Canine adenovirus antigen	Conjunctiva and nasal swab
		Rapid CIR3-3 Ag Test Kit	RG11-09	Dual Device	1Test X 10/Kit	Detection of Distemper antigen/Canine adenovirus/Canine influenza virus antigen	Conjunctiva and nasal swab
		Rapid CDV Ag/CIV Ag Test Kit	RG11-10	Dual Device	1Test X 10/Kit	Detection of Distemper antigen/Canine Influenza antigen	Conjunctiva and nasal swab
		Rapid CPV/CCV/Giardia Ag Test Kit	RG11-12	Triple Device	1Test X 5/Kit	Detection of Parvovirus antigen/Coronavirus antigen/ Giardia antigen	Feces
		Rapid Rabies Ag Test Kit	RG18-01	Device	1Test X 10/Kit	Detection of Rabies virus antigen	Brain homogenates
		Rapid Rota Ag Test Kit	RG18-03	Device	1Test X 10/Kit	Detection of Rotavirus antigen in bovine, porcine, canine	Diarrheal feces
		Rapid Giardia Ag Test Kit	RG18-04	Device	1Test X 10/Kit	Detection of Giardia antigen	Feces
		Rapid CPV Ab Test Kit	RB21-01	Device	1Test X 10/Kit	Titration of Parvovirus antibody for vaccination & prognosis	Whole blood, plasma or serum
		Rapid CDV Ab Test Kit	RB21-02	Device	1Test X 10/Kit	Titration of Distemper virus antibody for vaccination & prognosis	Whole blood, plasma or serum
		Rapid Canine brucella Ab Test Kit	RB21-03	Device	1Test X 10/Kit	Detection of Brucella canis antibody	Whole blood, plasma or serum
		Rapid Leishmania Ab Test Kit 2.0	RB21-04	Device	1Test X 10/Kit	Detection of Leishmania antibody	Whole blood, plasma or serum
		Rapid E.canis Ab Test Kit	RB21-05	Device	1 Test X 10/Kit	Detection of Ehrlichia canis antibody	Whole blood, plasma or serum
		Rapid Total IgE Test Kit	RB21-10	Device	1 Test X 10/Kit	Detection of IgE antibody	Whole blood, plasma or serum
		Rapid Anaplasma Ab Test Kit	RB21-21	Device	1 Test X 10/Kit	Detection of Anaplasma phagocytophilum antibody	Whole blood, plasma or serum
		Rapid Lyme Ab Test Kit	RB21-22	Device	1 Test X 10/Kit	Detection of Borrelia burgdorferi antibody	Whole blood, plasma or serum
		Rapid CaniV-4 Test Kit	RB21-20	Quattro Device	1 Test X 10/Kit	Detection of Dirofilaria immitis antigen, Ehrlichia canis, Borrelia burgdorferi, Anaplasma phagocytophilum/Anaplasma platys antibody	Whole blood, plasma or serum
		Rapid E.canis/Anaplasma Ab Test Kit	RB21-23	Dual Device	1 Test X 10/Kit	Detection of Ehrlichia canis/Anaplasma phagocytophilum/Anaplasma platys antibody	Whole blood, plasma or serum
Livestock		Rapid FeLV Ag Test Kit	RG12-01	Device	1Test X 10/Kit	Detection of Feline Leukemia virus antigen	Whole blood, plasma or serum
		Rapid FPV Ag Test Kit	RG12-03	Device	1Test X 10/Kit	Detection of Feline Panleukopenia virus antigen	Feces
		Rapid FIV Ab/FeLV Ag Test Kit	RC12-04	Dual Device	1Test X 10/Kit	Detection of Feline Leukemia virus antigen and Feline Immunodeficiency virus antibody	Whole blood, plasma or serum
		Rapid FCoV Ag Test Kit	RG12-05	Device	1Test X 10/Kit	Detection of Feline Corona virus antigen	Feces
		Rapid FIV Ab Test Kit	RB22-01	Device	1Test X 10/Kit	Detection of Feline Immunodeficiency virus antibody	Whole blood, plasma or serum
		Rapid FCoV Ab Test Kit	RB22-03	Device	1Test X 10/Kit	Detection of Feline Corona virus antibody	Whole blood, plasma or serum
		Rapid Toxoplasma Ab Test Kit	RB22-06	Device	1 Test X 10/Kit	Detection of Toxoplasma gondii antibody	Whole blood, plasma or serum
		Rapid FHW Ag/Ab Test Kit	RC22-05	Dual Device	1 Test X 10/Kit	Detection of Feline Heartworm antibody and antibody	Whole blood, plasma or serum
		Vet Urocolor 10 (50)	VU51-01	Strip	50 Strip/Bottle	Reagent Strips for Animal Urinalysis	Urine
		Vet Urocolor 10 (100)	VU51-02	Strip	100 Strips/Bottle	Reagent Strips for Animal Urinalysis	Urine
		Vet UroMeter 120	UM0120	Analyzer	Set	Urine chemistry analyzer	Urine
		Rapid Bovi D-4 Ag Test Kit	RG13-01	Quattro Device	1Test x 10/Kit	Detection of Bovine Rotavirus, Coronavirus and E.coli K99, Cryptosporidium antigen field infected	Diarrheal feces
		Rapid Bovi D-5 Ag Test Kit	RG13-02	Quattro Device	1Test x 10/Kit	Detection of Bovine Rotavirus, Coronavirus and E.coli K99, Cryptosporidium, Giardia antigen field infected	Diarrheal feces
		Rapid Bovine Coronavirus Ag Test Kit	RG13-03	Device	1Test x 9/Kit	Detection of Bovine Coronavirus antigen field infected	Diarrheal feces
		Rapid Cryptosporidium Ag Test Kit	RG13-04	Device	1Test x 10/Kit	Detection of Bovine Cryptosporidium antigen field infected	Diarrheal feces
		Rapid E.coli k99 Ag Test Kit	RG13-05	Device	1Test x 10/Kit	Detection of Escherichia coli k99 antigen field infected	Diarrheal feces
		Rapid Rota Ag Test Kit	RG18-03	Device	1Test x 10/Kit	Detection of Rotavirus antigen in bovine, porcine, canine	Diarrheal feces
		Rapid Bovine brucella Ab Test Kit	RB23-01	Device	1Test x 10/Kit	Detection of Brucella abortus antibody	Whole blood, plasma, serum or milk
		Rapid Bovine TB Ab Test Kit	RB23-02	Device	1Test x 10/Kit	Detection of Mycobacterium bovis antibody	Plasma, serum
		Rapid GS.Brucella Ab Test Kit	RB23-06	Device	1Test x 10/Kit	Detection of Brucella antibody in goats and sheep	Whole blood, plasma, serum or milk
		Rapid FMD NSP Ab Test Kit	RB28-02	Device	1Test x 10/Kit	Detection of Foot and mouth disease virus antibody field infected	Whole blood, plasma or serum
		Rapid PED Ag Test Kit	RG14-01	Device	1Test X 10/Kit	Detection of Porcine Epidemic Diarrhea virus antigen	Diarrheal feces
		Rapid TGE Ag Test Kit	RG14-02	Device	1Test X 10/Kit	Detection of Transmissible Gastroenteritis virus antigen	Diarrheal feces
		Rapid TGE Ag/PED Ag Test Kit	RG14-03	Dual Device	1Test X 10/Kit	Detection of TGE Ag and PED Ag	Diarrheal feces
		Rapid SIV Ag Test Kit	RG14-04	Device	1Test X 10/Kit	Detection of Swine Influenza virus antigen	Nasal fluid or tracheal swab and lung tissue
		Rapid PED Ag/Rota Ag Test Kit	RG14-05	Dual Device	1Test X 10/Kit	Detection of PED antigen and Rotavirus antigen in pigs	Diarrheal feces
		Rapid Rota Ag Test Kit	RG18-03	Device	1Test X 10/Kit	Detection of Rotavirus antigen in bovine, porcine, canine	Diarrheal feces
		Rapid AIV Ag Test Kit	RG15-01	Multi Device (30T)	1Test x 30/Kit	Detection of Avian influenza type A virus antigen	Diarrheal feces, Cloaca feces, or Trachea
		Rapid AIV Ag Test Kit	RG15-02	Device (25T)	10Tests x 3/Kit	Detection of Avian influenza type A virus antigen	Diarrheal feces, Cloaca feces, or Trachea
		Rapid NDV Ag Test Kit	RG15-03	Device	1Test x 10/Kit	Detection of Newcastle Disease virus antigen	Cloaca feces, Trachea
		Rapid IBDV Ag Test Kit	RG15-04	Device	1Test x 10/Kit	Detection of Infectious Bursal Disease virus antigen	Bursa of Fabricious, Feces
		Rapid H5 AIV Ag Test Kit	RG15-05	Device	1Test x 25/Kit	Detection of avian influenza type A subtype H5 virus antigen	Diarrheal feces, Cloaca feces, or Trachea
		Rapid AIV type A/H5 AIV Ag Test Kit	RG15-06	Dual Device	1Test x 10/Kit	Detection of avian influenza type A and H5 antigen	Diarrheal feces, Cloaca feces, or Trachea
		Rapid AIV Ag/NDV Ag Test Kit	RG15-09	Dual Device	1Test x 10/Kit	Detection of avian influenza type A and NDV antigen	Diarrheal feces, Cloaca feces, or Trachea
		Rapid IBV Ag Test Kit	RG15-13	Device	1Test x 10/Kit	Detection of Infectious Bronchitis virus antigen	Diarrheal feces, Cloaca feces, or Trachea
		Rapid AIV Ab Test Kit	RB25-01	Multi device	10Tests x 3/Kit	Detection of Avian Influenza Virus Type A antibody	Plasma, serum


ELISA

	Species	Product	Cat. No.	Type	Packing Size	Description	Sample
Livestock		Bovine Brucella Ab ELISA	EB43-01-(96)	Microplate	480 (96) wells/Kit	Detection of Brucella abortus antibody	Serum, Plasma
		BTB Ab ELISA 2.0	EB43-04-(96)	Microplate	480 (96) wells/Kit	Detection of Mycobacterium bovis antibody	Serum
		FMD NSP Ab ELISA	EB48-01-(96)	Microplate	480 (96) wells/Kit	Detection of Foot-and-mouth disease virus antibody field infected in cattle, pig, goat, sheep	Serum, Plasma
		TB feron ELISA	EB38-01-(96)	Microplate	480 (96) wells/Kit	Detection of Gamma interferon for Mycobacterium bovis	Plasma
		CSFV Ab ELISA	EB44-13-(96)	Microplate	480 (96) wells/Kit	Detection of Classical swine fever virus antibody for routine screening	Serum, Plasma
		PRRS Ab ELISA 4.0	EB44-04-(96)	Microplate	480 (96) wells/Kit	Detection of Porcine Reproductive and Respiratory Syndrome (PRRS) antibody	Serum, Plasma
		PED IgA ELISA	EB44-10-(96)	Microplate	480 (96) wells/Kit	Detection of Porcine epidemic diarrhea virus IgA antibodies in pigs	Colostrum
		AIV Ab ELISA	EB45-02-(96)	Microplate	480 wells/Kit	Detection of Avian influenza type A virus antibody in chicken, duck, goose	Serum, Plasma or egg yolk
		H5 AIV Ab ELISA	EB45-03-(96)	Microplate	480 wells/Kit	Detection of Avian influenza virus subtype H5 antibody in chicken, duck, goose	Serum, Plasma
		NDV Velo Ab ELISA	EB45-01-(96)	Microplate	480 wells/Kit	Detection of Newcastle Disease velogenic virus antibody in chicken	Serum
		IBV Ab ELISA	EB45-05-(96)	Microplate	480 wells/Kit	Detection of Infectious Bronchitis virus antibody in chicken	Serum
		IBDV Ab ELISA	EB45-07-(96)	Microplate	480 wells/Kit	Detection of Infectious Bursal Disease	Serum
		NDV Ab ELISA	EB45-06-(96)	Microplate	480 wells/Kit	Detection of Newcastle Disease virus antibody in chicken	Serum

Conventional PCR

	Species	Product	Cat. No.	Type	Packing Size	Description	Sample
Livestock		AIV Detection Test Kit	PD55-01-(20)	Conventional PCR	96 (24) reactions/Kit	Detection of AIV type A	Diarrheal feces, Cloaca feces, or Trachea
		H5 AIV Detection Test Kit	PD55-02-(20)	Conventional PCR	96 (24) reactions/Kit	Detection of AIV subtype H5	Diarrheal feces, Cloaca feces, or Trachea
		H7 AIV Detection Test Kit	PD55-03-(20)	Conventional PCR	96 (24) reactions/Kit	Detection of AIV subtype H7	Diarrheal feces, Cloaca feces, or Trachea
		H9 AIV Detection Test Kit	PD55-04-(20)	Conventional PCR	96 (24) reactions/Kit	Detection of AIV subtype H9	Diarrheal feces, Cloaca feces, or Trachea
		Lento NDV Detection Test Kit	PD55-07-(20)	Conventional PCR	96 (24) reactions/Kit	Detection of low pathogenic NDV virus (Lentogenic)	Cloaca feces, Trachea
		Velo NDV Detection Test Kit	PD55-08-(20)	Conventional PCR	96 (24) reactions/Kit	Detection of high pathogenic NDV virus (Velogenic)	Cloaca feces, Trachea
		IBDV Detection Test Kit	PD55-11-(20)	Conventional PCR	96 (24) reactions/Kit	Detection of Infectious Bursal Disease Virus	Bursa of Fabricious, Feces
PET Animal		CDV Detection Test Kit	PD51-03-(20)	Conventional PCR	96 (24) reactions/Kit	Detection of Canine Distemper Virus	Conjunctiva, saliva, urine, plasma or serum
		Leishmaniasis Detection Test Kit	PD51-04-(20)	Conventional PCR	96 (24) reactions/Kit	Detection of Leishmania	Whole blood, plasma or serum
		E.canis Detection Test Kit	PD51-05-(20)	Conventional PCR	96 (24) reactions/Kit	Detection of E.canis	Whole blood, plasma or serum

Real-Time PCR

	Species	Product	Cat. No.	Type	Packing Size	Description	Sample
Livestock		AIV A Real-Time Detection Test Kit	PD65-01-(20)	Real-Time PCR	96 (24) reactions/Kit	Detection of AIV type A	Diarrheal feces, Cloaca feces, or Trachea
		H5 AIV Real-Time Detection Test Kit	PD65-02-(20)	Real-Time PCR	96 (24) reactions/Kit	Detection of AIV subtype H5	Diarrheal feces, Cloaca feces, or Trachea
		H7 AIV Real-Time Detection Test Kit	PD65-03-(20)	Real-Time PCR	96 (24) reactions/Kit	Detection of AIV subtype H7	Diarrheal feces, Cloaca feces, or Trachea
		H9 AIV Real-Time Detection Test Kit	PD65-04-(20)	Real-Time PCR	96 (24) reactions/Kit	Detection of AIV subtype H9	Diarrheal feces, Cloaca feces, or Trachea
		REV Real-Time Detection Test Kit	PD65-05-(20)	Real-Time PCR	96 (24) reactions/Kit	Detection of Reticuloendotheliosis Virus	Blood, Tissue (Scab, Pharyngeal lesions)
		MDV Real-Time Detection Test Kit	PD65-06-(20)	Real-Time PCR	96 (24) reactions/Kit	Detection of Marek's disease virus	Tissue (Spleen), Buffy coat, Lymphoma cell
		Lento NDV Real-Time Detection Test Kit	PD65-07-(20)	Real-Time PCR	96 (24) reactions/Kit	Detection of low pathogenic NDV virus (Lentogenic)	Cloaca feces, Trachea
		Velo NDV Real-Time Detection Test Kit	PD65-08-(20)	Real-Time PCR	96 (24) reactions/Kit	Detection of high pathogenic NDV virus (Velogenic)	Cloaca feces, Trachea
		IBV Real-Time Detection Test Kit	PD65-09-(20)	Real-Time PCR	96 (24) reactions/Kit	Detection of Infectious Bronchitis Virus	Diarrheal feces, Cloaca feces, or Trachea
		TRT Real-Time Detection Test Kit	PD65-10-(20)	Real-Time PCR	96 (24) reactions/Kit	Detection of Infectious Turkey Rhinotracheitis	Nasal exudates, Choanal cleft swab, Scraping of sinus and turbinates tissue
		IBDV Real-Time Detection Test Kit	PD65-11-(20)	Real-Time PCR	96 (24) reactions/Kit	Detection of Infectious Bursal Disease Virus	Bursa of Fabricious, Feces
		REO Real-Time Detection Test Kit	PD65-12-(20)	Real-Time PCR	96 (24) reactions/Kit	Detection of Avian Reovirus	Feces, Trachea, Liver, Bursa, Kidney, Spleen
		ORT Real-Time Detection Test Kit	PD65-13-(20)	Real-Time PCR	96 (24) reactions/Kit	Detection of Ornithobacterium rhinotracheale	Swab (drag swab)
		MYCO G/S Real-Time Detection Test Kit	PD65-14-(20)	Real-Time PCR	96 (24) reactions/Kit	Detection of Avian Mycoplasma gallisepticum, and M. iowae, M. meleagridis, M. synoviae	Oronasal fluid, Oropharynx, Oesophagus, Trachea, Eyes, Cloaca, Pads, Nails, and any fluid in sinus, Air sacs
		ALV Real-Time Detection Test Kit	PD65-15-(20)	Real-Time PCR	96 (24) reactions/Kit	Detection of Avian Leukosis Virus	Liver, Spleen
		AIV H5/N1 Duplex Real-Time Detection Test Kit	PD65-51-(20)	Real-Time PCR	96 (24) reactions/Kit	Detection of AIV H5 and N1	Diarrheal feces, Cloaca feces, or Trachea
		SIV A(H1N1) Real-Time Detection Kit	PD64-01-(20)	Real-Time PCR	96 (24) reactions/Kit	Detection of Swine Influenza Virus H1 typing	Nasal fluid or Tracheal swab and Lung tissue
		SIV Real-Time Detection Test Kit	PD64-02-(20)	Real-Time PCR	96 (24) reactions/Kit	Detection of Swine Influenza Virus	Nasal fluid or Tracheal swab and Lung tissue
		PCV-2 Real-Time Detection Kit	PD64-03-(20)	Real-Time PCR	96 (24) reactions/Kit	Detection of Porcine Circovirus	Tissue samples (Lung, Liver, Mesenteric lymph node)
		PRRSV Real-Time Detection Kit	PD64-04-(20)	Real-Time PCR	96 (24) reactions/Kit	Detection of Porcine Reproductive and Respiratory Syndrome Virus	Blood, Tissues, Semen
		CSFV Real-Time Detection Kit	PD64-05-(20)	Real-Time PCR	96 (24) reactions/Kit	Detection of Classical Swine Fever Virus	Blood, Viral culture, Tissues
		Influenza A(H1N1) Real-Time Detection Test Kit (2Wells type)	PD65-18-(20)	Real-Time PCR	96 (24) reactions/Kit	Detection of Novel Influenza A(H1N1) Virus (MP-House keeping gene/H1)	Nasal fluid or Tracheal swab and Lung tissue
		Influenza A(H1N1) Real-Time Detection Test Kit (4Wells type)	PD65-19-(20)	Real-Time PCR	96 (24) reactions/Kit	Detection of Novel Influenza A(H1N1) Virus (MP/NP/H1/House keeping gene)	Nasal fluid or Tracheal swab and Lung tissue
		FMD Real-Time Detection Kit	PD68-01-(24)	Real-Time PCR	96 (24) reactions/Kit	Detection of Foot and Mouth disease Virus	Oral mucosa and Tongue swabs, Vesicular epithelium
		BVDV Real-Time Detection Kit	PD63-02-(24)	Real-Time PCR	96 (24) reactions/Kit	Detection of Bovine Viral Diarrheal Disease Virus	Blood, Serum, Tissues (Lung, Spleen, etc), Milk, Ear tag
		BTV Real-Time Detection Kit	PD63-03-(24)	Real-Time PCR	96 (24) reactions/Kit	Detection of Bluetongue Virus	Blood
		IBR Real-Time Detection Kit	PD63-04-(24)	Real-Time PCR	96 (24) reactions/Kit	Detection of Infectious Bovine Rhinotracheitis Virus	Semen, Nasal swabs, Conjunctival and Vaginal swabs
		SBV Real-Time Detection Kit	PD63-06	Real-Time PCR	96 (24) reactions/Kit	Detection of Schmallenberg Virus	Tissues(brain, spleen), Blood
PET Animal		CHW Real-Time Detection Kit	PD61-02-(20)	Real-Time PCR	96 (24) reactions/Kit	Detection of Canine Heartworm	Whole blood, Plasma or Serum

	Species	Product	Cat. No.	Type	Packing Size	Description	Sample
		OneStep RT-PCR Kit	RK50-01	RT-PCR	100 Reactions		
		SYBR Green RT-PCR Kit	RK50-02	RT-PCR	1000 Reactions		
		Viral RNA purification Kit	RK50-90		250 Reactions		

