

FHW Ag/Ab

*One step Feline Heartworm
Antigen & Antibody*

About Feline Heartworm

Heartworm (*Dirofilaria immitis*) is a parasite that lives in the pulmonary artery and hearts of dogs and cats. It is also found in other species including ferrets, foxes, wolves, sea lions, and horses. Heartworm disease presents very differently according to the host species with canines being the most common host for the parasite. *Dirofilaria immitis* enters an animal's system as an immature worm via mosquito bites, and then grows to an adult worm that will reproduce in the pulmonary artery of the infected host.

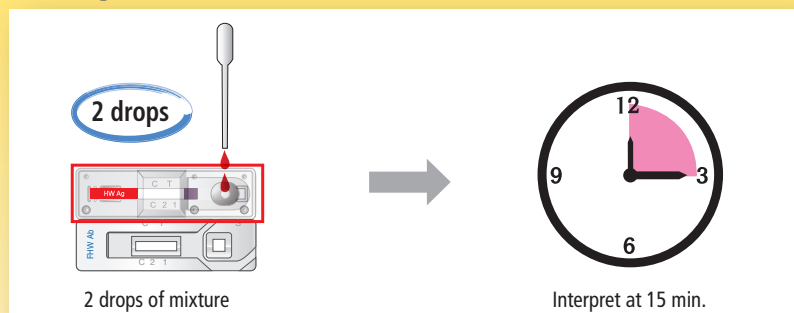
Cats are an atypical host of *Dirofilaria immitis* and once they are infected, it is more dangerous than the infection in dogs. The feline heart and pulmonary artery are smaller than in dogs so infections

with fewer parasites might cause severe pathology and threaten the life of the cat. Usually pathology in this host is associated with death and decomposition of immature and mature parasites in the pulmonary artery.

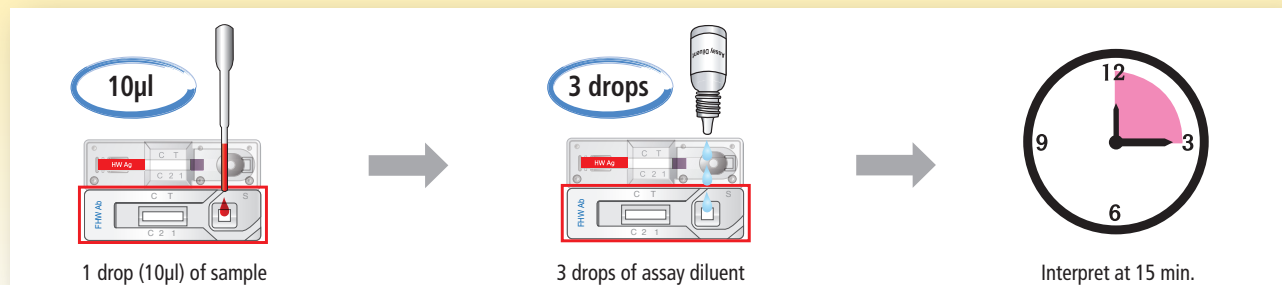


Test Procedures

FHW Ag Test Procedure



FHW Ab Test Procedure





Feline

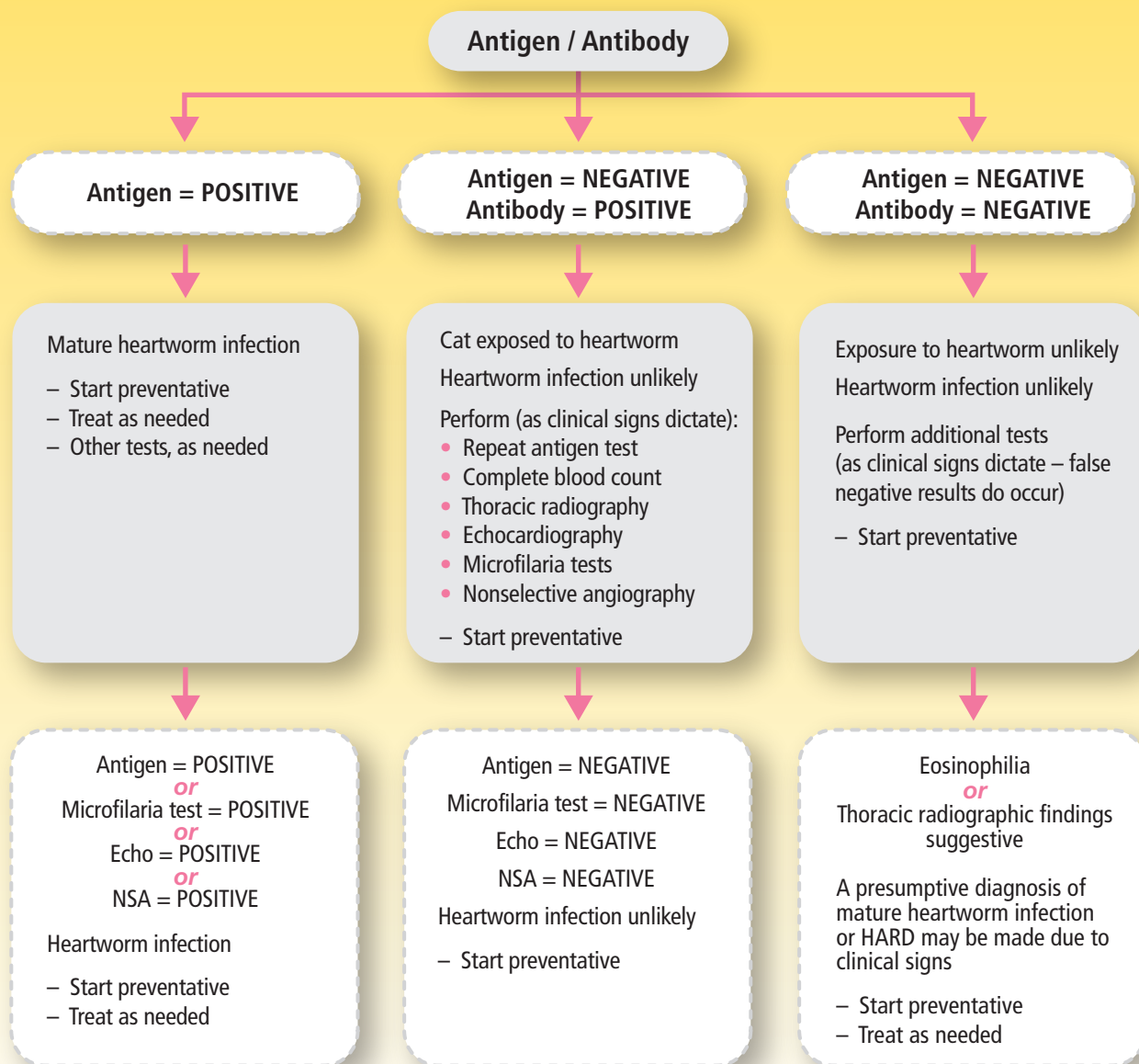


Whole blood
Serum/Plasma



15 min.

Diagnosis Flow Chart



Algorithm demonstrating the approach to the diagnosis of heartworm infection in cats in which infection is suspected. [Textbook of Veterinary Internal Medicine, 7th Edition]

Ordering Information

Catalogue No.	Description	Type	Packing size
RC22-05-05	FHW Ag/Ab	Combo Device	1 Test x 5/Kit



Imported by Life Bioscience
Technical support: 03 9568 4140
info@lifebioscience.com.au



Distributed by Pharmachem
Phone: 07 3868 0333
info@pharmachem.com.au